

ESD as New Social Paradigm

PARK, Eun-kyung, Ph.D

**Chairperson,
National ESD Committee of Korea UNESCO**

**Ex - Ambassador for Water Resources,
Ministry of Foreign Affairs**

9 September 2014

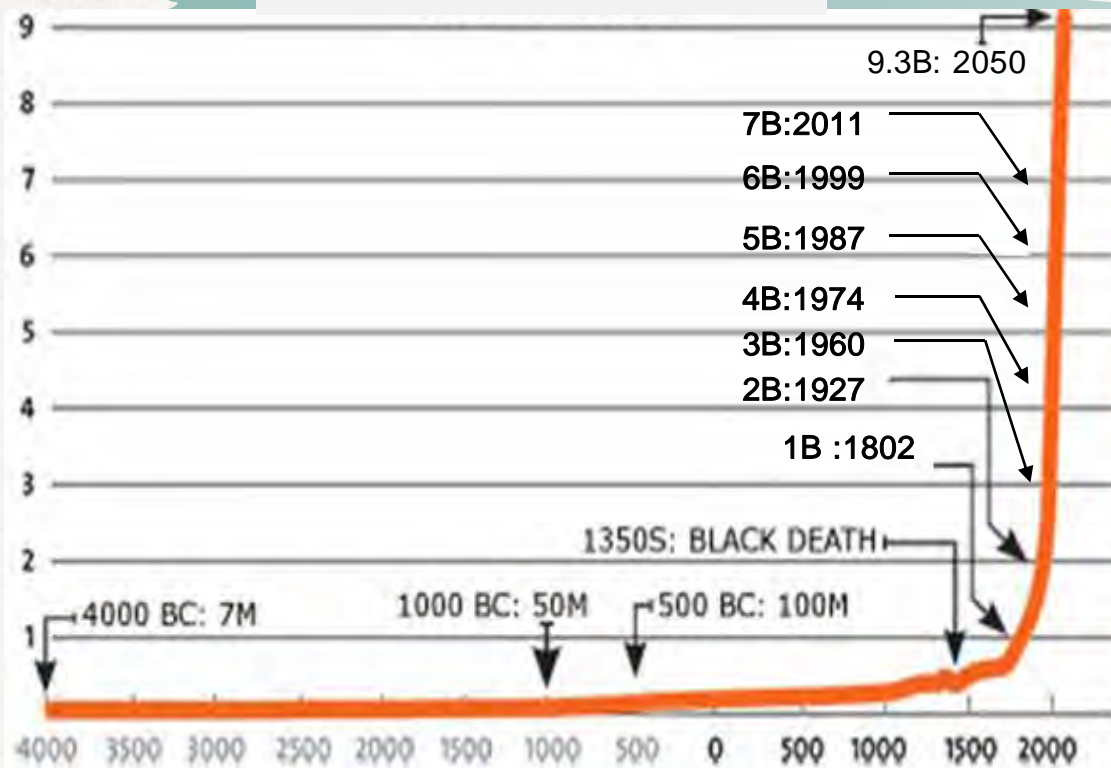
Statistics of Earth

- Origin of Earth: 4.6 billion years
- Origin of Living creature: 3 billion years
- Origin of Human Beings: 4.5 million years
- Hunters and Gatherers: m/t 95% of H. history
- Settlements of human beings: 10,000 years
- Horticultural, Pastoral, Agricultural society
- Industrial society : 150 years

Unlimited Population Growth

World Population reached **7 billion**, Oct 30, 2011

TOTAL WORLD POPULATION:
PAST, PRESENT, AND FUTURE
4000BC - 2050

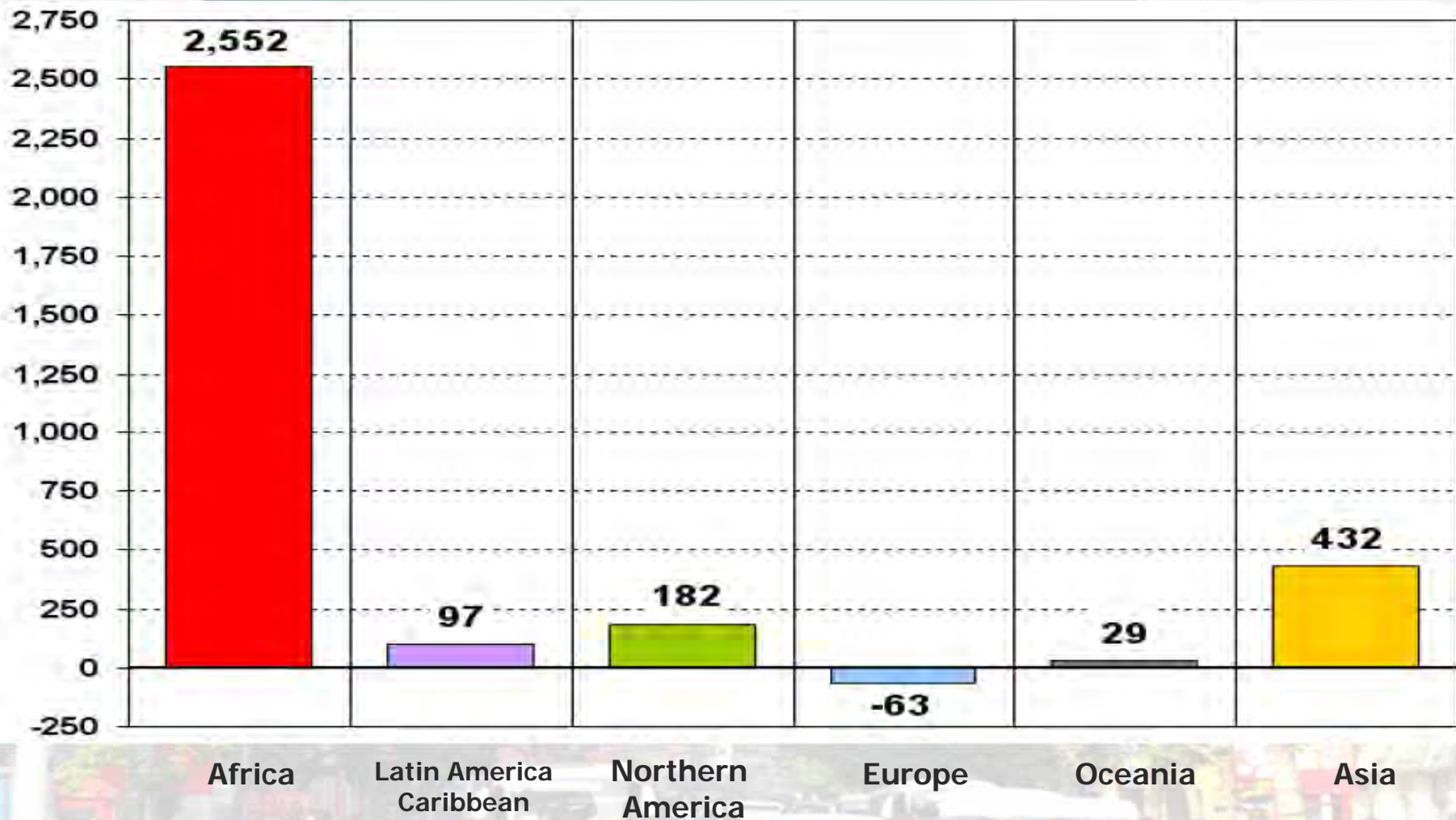


18 July, 2014

(Future figures based on UN projections)

Prospect of Regions

2010 - 2100 (unit: million) increase 3.2 billion



Source: United Nations, Department of Economic and Social Affairs, Population Division (2011): World Population Prospects: The 2010 Revision, New York, 18 July, 2014

Water and Energy



- Energy generation and transmission requires utilization of water resources, particularly for hydroelectric, nuclear, and thermal energy sources.
- Conversely, about 8% of the global energy generation is used for pumping, treating and transporting water to various consumers.

*"On World Water Day, let us pledge to develop **various** policies needed to ensure that sustainable water and energy are secured for the many and not just the few".*

Ban UN S-G Message for the 2014 World Water Day

Water - Energy - Food Nexus

- 70% of fresh water used by humans and 70% of human water used for farming
- Food - Energy: for food production and transporting process, 30% of Earth energy consumed (FAO, 2011)
- By 2050 to feed 9.3 billion people 60% food (50% of water), 50% of energy will be demanded

18 July, 2014 “There is no water which is not good!”

World Without Water

(Financial Times, 15 July, 2014)

- “Today, you cannot have a political discussion anywhere without talking about climate change.” Nestle chairman Peter Brabeck,” - - - this water problem is much more urgent - - - even without climate change we are running out of water and this has to become the first priority.”

Geometric Progression of Resource Depletion

- By 2030, the global middle class is likely to have surged from nearly 2bn to 5bn(OECD) .
- Middle class people begin to prefer hamburger beyond a bowl of vegetables.
- UN calculation: 2,400 litre of water for hamburger/ 30 litre for potatoes or tomatoes// virtual water.

Water - Energy - Food(nexus)

- 70% of fresh water used by humans -70% of used water is for agriculture
- 30% of global energy consumed for food production and process of supply (FAO,2011)
- By 2050 (pop: 9.3 billion) demand for food will be 60% (need 50% more of water), and 50% increase of energy

“There is no water , which is not good.”

(Bonn +10, “2011)

UN SD Process (1972-1982-1992-2002-2012)

- The **Brundtland Commission**, formally the **World Commission on Environment and Development (WCED)**, was convened by UN in 1983. The commission was created to address growing concern "about the accelerating deterioration of the **human environment and natural resources** and the consequences of that deterioration for **economic and social development**." In establishing the commission, the UN General Assembly recognized that environmental problems were global in nature and determined that it was in the common interest of all nations to establish policies for sustainable development. In 1987 ***Our Common Future***: Brundtland Report: the first publication to popularize the term 'Sustainable Development'
- **Stockholm +10, Nairobi, Kenya**
- **UNCED (Conference of Environment and Development)**, *Rio de Janeiro, 3-14 June 1992* :*Rio Declaration* on Environment and Development -- the four pillar model of SD(economic, social, environmental and institutional) the Rio Action Plan, Agenda 21, 40 chapters, 178 countries , 30,000 individuals to discuss solutions for global problems such as poverty, war, and the growing gap between industrialized and developing countries.
- **WSSD(World Summit on SD)**, *Johannesburg 26 August-4 Sept. , 2002.*
- **UNCED (Rio +20 , The Future We Want)**, 20-22 June, 2012.
Post MDG → SDG

Common but Differentiated !

Rio Declaration (1992)

- Principle 7

“States shall cooperate in a spirit of global partnership to conserve, protect and restore the health and integrity of the *earth's ecosystem*. In view of the different contributions to global environmental degradation, States have *common but differentiated* responsibilities.”

Ecological & Economic Debt /Ecological Footprint

All 7 billion members of Earth community are in debt of either Ecological (Northern Developed Countries) or economic (Southern developing countries).

7 Critical Issues of Rio+20

“The Future We Want”: holistic approach

- Jobs/Energy/Cities/Food/Water/Oceans/Disasters
 - the 190 million unemployed, and for over 500 million job seekers over the next 10 years
 - Since 2005 one out of two persons living in urban areas
 - Energy - Food - Water nexus
 - oceans' temperature, chemistry, currents and life produce the Earth habitable for humankind.
 - Resilience by wise choices relate to: foods, settlements, financial systems, schools to teach and train-- smart future building by planning ahead and staying alert

Jobless Growth

- United States of America
 - since 1970s : the production output increase 6 more = 10% decrease of employment
- Korea
 - 1990s : 1% of economic growth = employment of 80,000 persons
 - Currently : employment of 40,000 persons

Work(job) - Life (home) Balancing

- Industrialization : separation of living quarter and working place (factories)
- Post-Industrialization/Information : WLB(Work Life Balance): new organization of labor force to meet the increasing efficiency rate of production—art,culture leisure being included in employment.

Hyper - Connected Age

Individual-based society: self-identity in various spheres

- 1) New path of empowerment in diverse areas for basic understanding and skills
- 2) Big data: recording all the living activities in detail via mobile, card, CCTV
- 3) Globalized network: e-mail, caucus ,etc. – participatory act in local as well as global level

: Individual ego towards global connection

New Model of Society

Resource depletion/ Limits of the Planet:

- Human - centered (anthropocentric view) → Eco - centered
- Ego - centered → Eco - centered
- Linear recording (left - brain) → Actual circular world (right - brain)
- Black/white thinking → grey thinking

Long-term Goal: SD

- Shared interests with all living things including Gaia
 - collective responsibility
 - Understanding - shared values - building skills
- Change of choices and behaviors

ESD Process

- ESD changes behaviors and choices
- Understanding - shared values - building skills
 - Children: early childhood development program - prepare for challenges of life and decent livelihood
 - Youth and adult: functional literacy, numeracy, and skills for employment
 - Lifelong learning : understand 'the sustainable literary resources' to live with

ESD as Social Remedy

- ESD should enhance the capacity for critical thinking:
 - To understand complexity
 - To consider values and norms
 - To contribute in practical ways to sustainable development
- ESD is not a topic that can be taught in a few weeks just at a certain age, that is, a life-long learning
- ESD should be given attention in *all sectors* of education, and at *all levels* in relation to relevant, already existing subjects in an *integrated manner*.

Adaptation to New Age

- Adaptability thru Creativity and Diversity → problem –solving Strategy
- How to live in this diversified and interlinked society? - Selection of personal role in diversified world to reach personal recognition and satisfaction (self - esteem)
- Individual in community and global link – direct connection in communal affairs as well as the global issues by valuing the peace of individual mind and body/community

ESD to Build Indiv'l Esteem

- ESD - - practical, problem - solving value and skill in personal level as well as community level : by reviving traditional crafts and way of living, reach self - esteem and community - esteem
- Love their own nature, culture and history and build up self - loving community → a way to learn other community also has their own loving society and culture → reach co - existing Peaceful Sustainable Future

Policy for Implementing ESD

- Linking technology to the policy in behavioral change is ESD
- ESD is integrating elements of social, economic, and environmental sectors as well as various multi-stakeholders, the major groups—good governance, partnership
- ESD need to be integrated into policy for efficient and effective practice- EE law, Consumer Education Promotion law, GG law, ESD law, etc.
- ESD should also to be institutionalized, RCE.

ESD - related Laws

- *Action Plan for Education for Sustainable Development (2006)*
- *Basic Law on Sustainable Development and its Enforcement (2008)*
- *Environmental Education Promotion Act (2008)*
- *Basic Law on Low Carbon Green Growth and its Enforcement (2010)*
- *2nd EE Master Plan (2011 - 2015):*

Korean National Committee on ESD

- National focal point for ESD, by promoting numerous activities the foundation of broad partnerships and networking among governments, international and intergovernmental organizations, civil society, private sector, etc. - - DESD national coordinating body financially supported by MEST
- Established in 2009 as a Special Committee of KNCU plans, reviews, and decides domestic ESD policies and strategies through biannual meetings
- Composed of approx. 20 members from the government, research institutes, representatives of different sectors of society
- ESD Research, publications, public conferences, ESD certificates, etc

RCEs

Regional Centre of Expertise on Education for Sustainable Development
: A program of the United Nations University

Tongyeong designated as the 8th RCE in the world.
There are 127 acknowledged RCEs.



The Vision

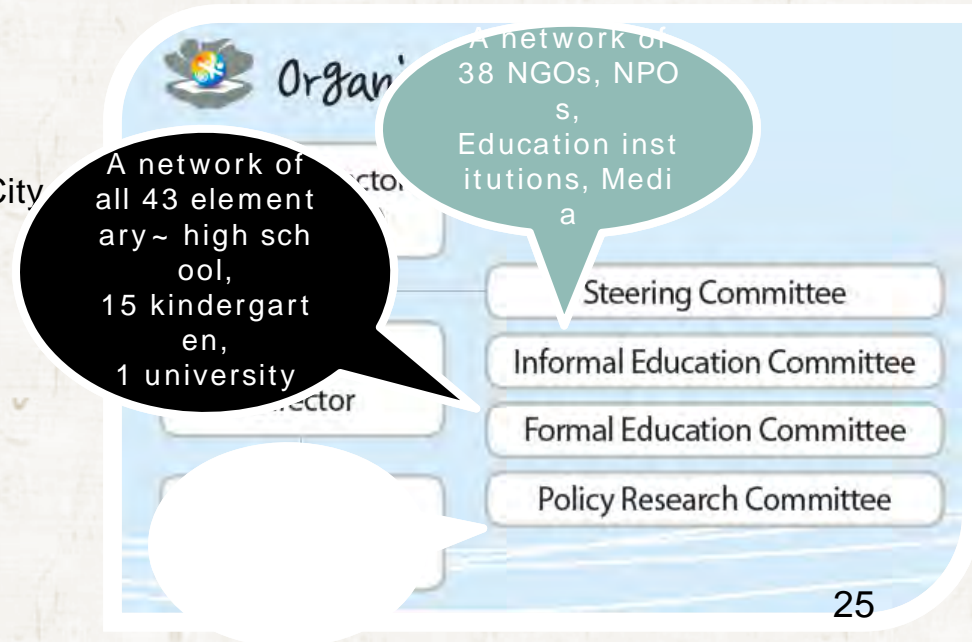
: An environmentally, economically, and socially sustainable city which cultivates pride in its citizens.

The Mission of RCE Tongyeong

: Promotion of sustainable development of Tongyeong through education.

RCE Tongyeong Milestones

- Oct. 2005. Designated as the 8th RCE, UNU
- July. 2007. Designated as a Life-long Learning City
Ministry of Education
- Apr. 2008. Initiated Planning for a Foundation
- May. 2010. Established Municipal rule
- Jan. 2011. Established Secretariat
- Sep. 2011. Groundbreaking of RCE Tongyeong
Eco-park & Sejahtera Centre
- Sep. 2012. 7th Global RCE Conference
- Sep. 2013. Win 2013 Korea Environmental Award



RCE Tongyeong Program overview

Individual
growth
& sharing



Youth Development
Bridge to the World



Youth Development
P'Cademy



Life-long Learning and
Sharing
Literacy for Islanders

Growth of
education
institutes



Informal Education Network
Joint Project



Informal Education Network
**SaengSaeng
Cooperative Project**



School Education Network
Teacher Training

From local to
global



R&D
**ESD Index Monitoring &
Evaluation**



Global ESD Network
**Tongyeong ESD
International Forum**



Global ESD Network
Sejahtra fellowship

18 July, 2014

Sejahtera Centre Overview

“ ”
coexistence

- ‘Sejahtera’ : *the philosophy of sustainability*

- ‘Sejahtera Project’ :

A joint initiative of RCEs in Asia Pacific to find the alternative path towards sustainability, acknowledged by the members as existent within the unique traditional culture of Asia Pacific region with emphasis on the coexistence.

- ‘Sejahtera Centre’ : Initiated as a part of the Sejahtera initiative for the Asia Pacific RCEs



❖ Project overview

- 2007 ~ 2015
- 20million USD project
- Supported by the Ministry of Environment
- 200,000m² Eco park
- *Sejahtera Centre of 23 Asia Pacific RCEs*

❖ A creative research & teaching centre for AP RCEs and ESD related institutions

❖ Construction kickoff: Sept. 2011

❖ Open due : **March. 2015**



ek_pj @ yahoo.com