

Nuclear Power Stations Nuclear Reactors near Epicenter of the Earthquake

Fukushima Dai-ichi NPP



Fukushima Dai-ni NPP



- Occurred 14:46 March 11, 2011
- Magnitude: 9.0 Mw
- Epicenter location: 38°6''N and 142°51''E, and 24km in depth
- It is said that the height of tsunami which attacked Fukushima NPP was higher than 14 m (Max. 39 m at Taro town)

9

Disaster Medical Activities in Fukushima Medical University (FMU)

- 35 Disaster Medical Teams were organized by 180 medical staffs of FMU and all Japan at 2011.3.11.
- We accepted 168 emergency patients (Stable 93, unstable 44, Severe 30,), and temporary accepted 80 patients on the way to transfer away from the affected areas during the first week.
- More than 500 evacuees were tested for radiological screening during the first week.



Medical Activities for Nuclear Accident at Fukushima Medical University



Emergency treatment



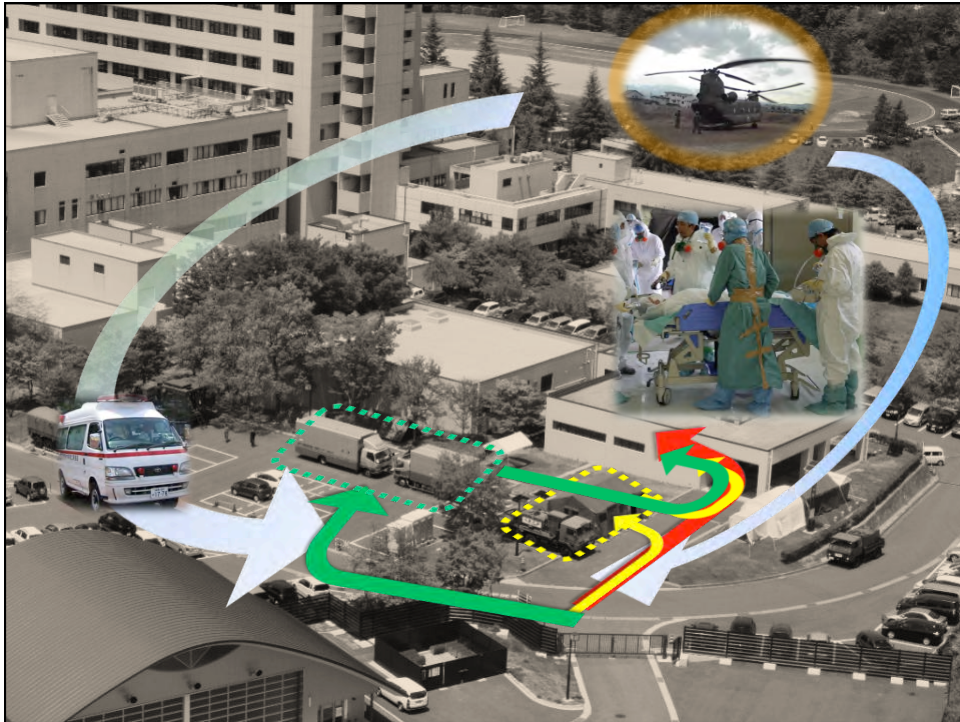
Training



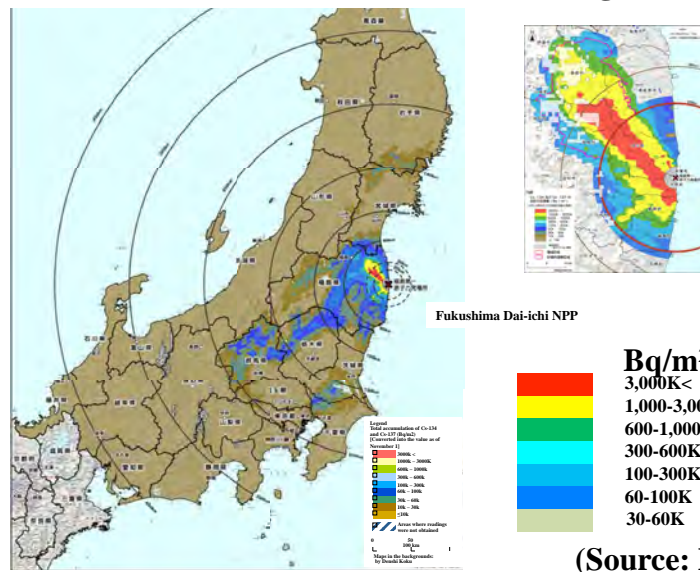
TV meeting



Decontamination Supports by Force and JAEA



**Results of the Airborne Monitoring Survey by MEXT
as of November 1, 2011**
(Total accumulation of Cs-134 and Cs-137 on the ground surface)



Estimation of the Amount of Radionuclides Released from the Damaged Nuclear Power Plant

- Estimation by NSC based on the data of environmental monitoring and air diffusion
(March 11 to April 5)

^{131}I : $1.5 \times 10^{17} \text{Bq}$

^{137}Cs : $1.2 \times 10^{16} \text{Bq}$

- Estimation by NISA and JNES based on the plant data immediately after the accident.

^{131}I : $1.6 \times 10^{17} \text{Bq}$

^{137}Cs : $1.5 \times 10^{16} \text{Bq}$

(NSC: Nuclear Safety Commission)

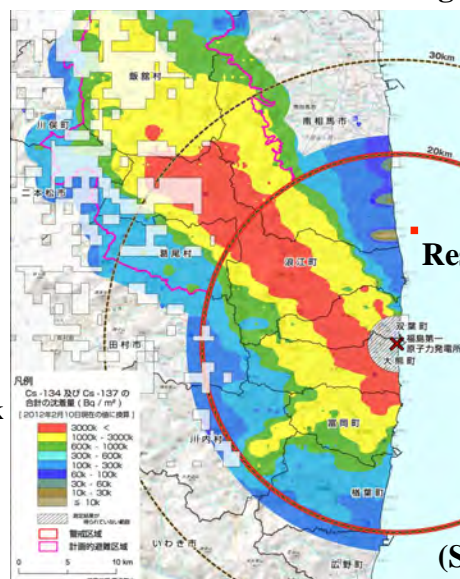
(NISA: Nuclear and Industrial Safety Agency)

(JNES: Japan Nuclear Energy Safety Organization)

15

Results of the Airborne Monitoring Survey by MEXT as of February 1, 2012 (Total accumulation of Cs-134 and Cs-137 on the ground surface)

Deliberate
Evacuation Area



Restricted Area

(Source: MEXT)