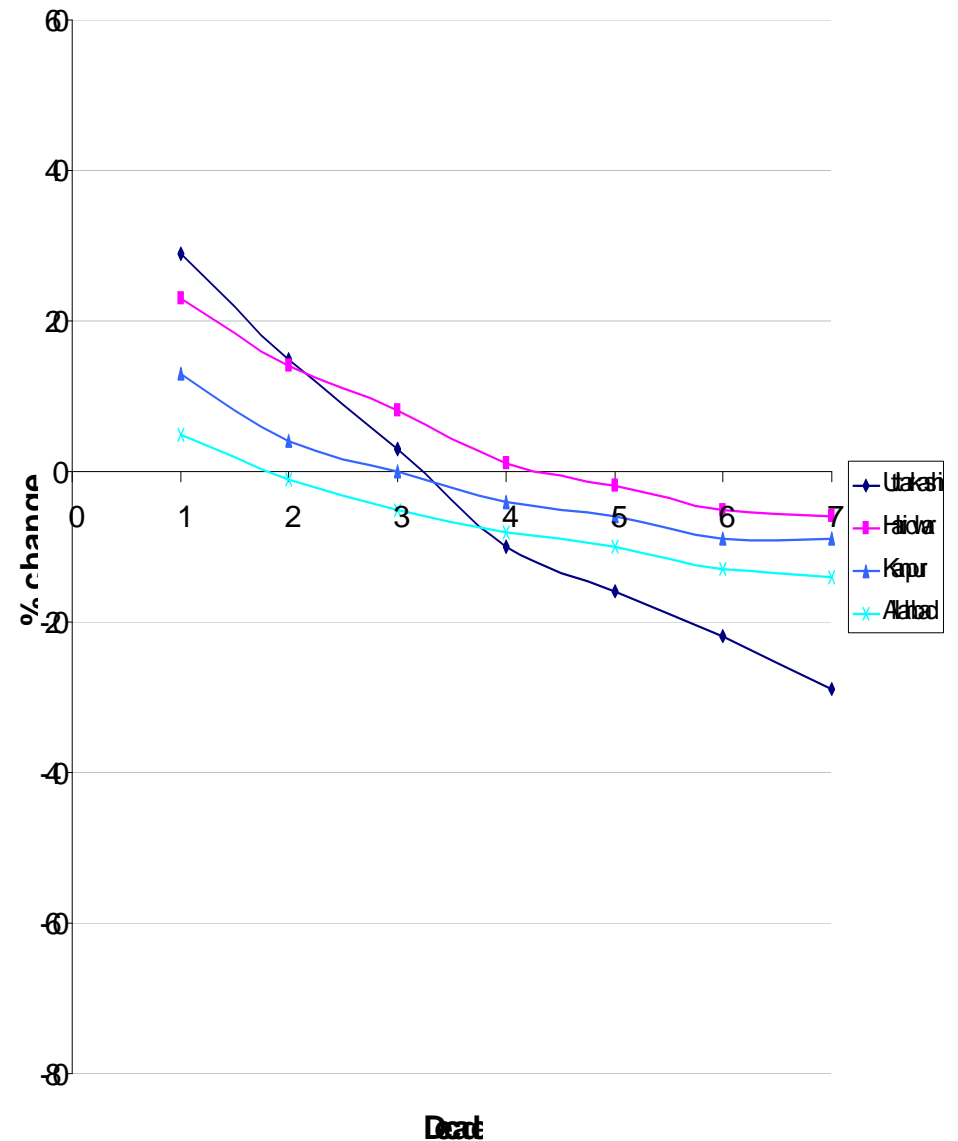
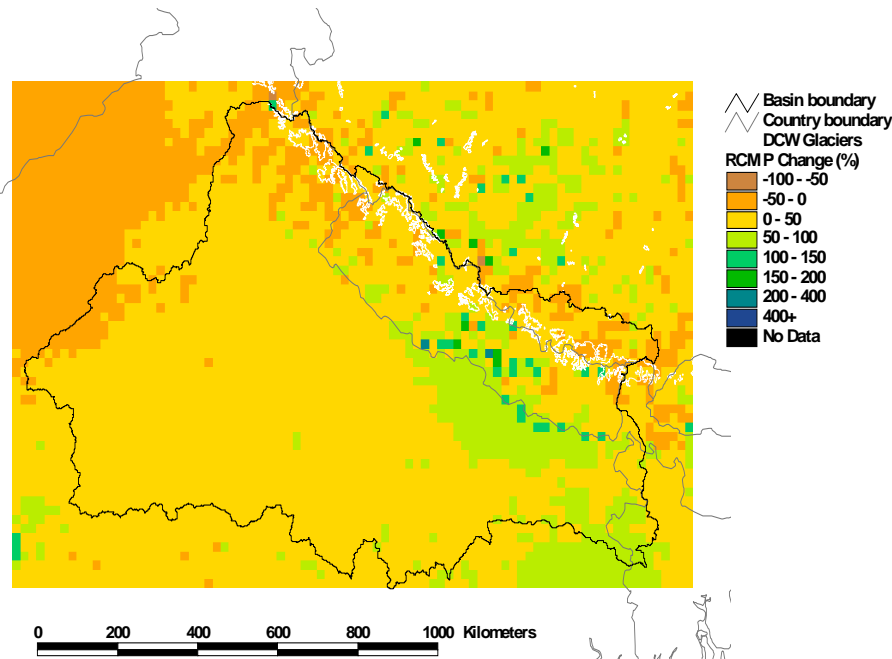
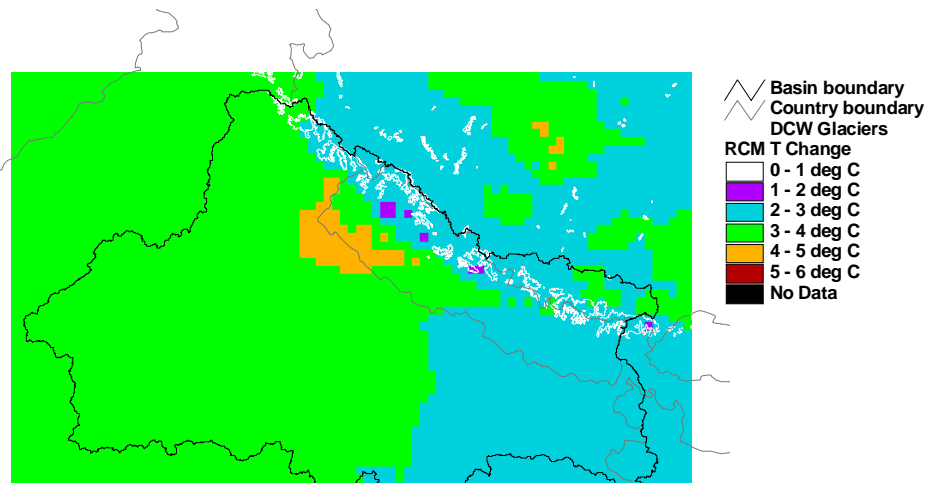
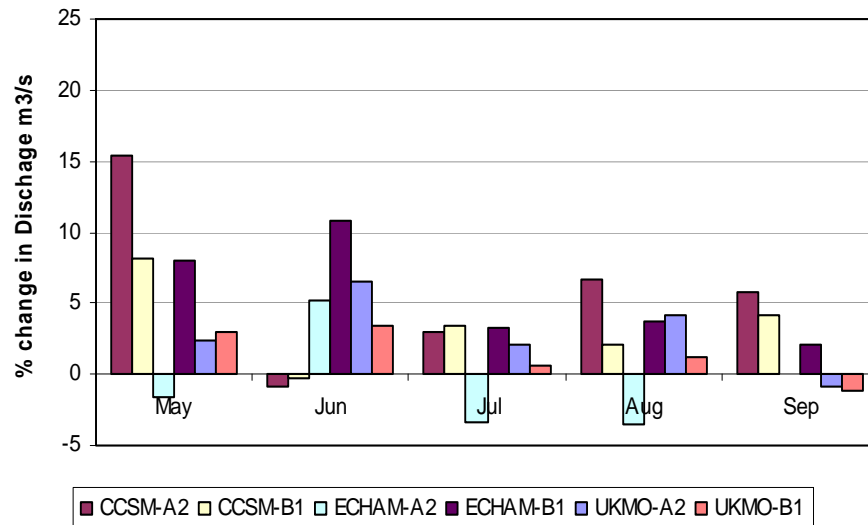


%change in decadal mean flow for Ganges from regional climate

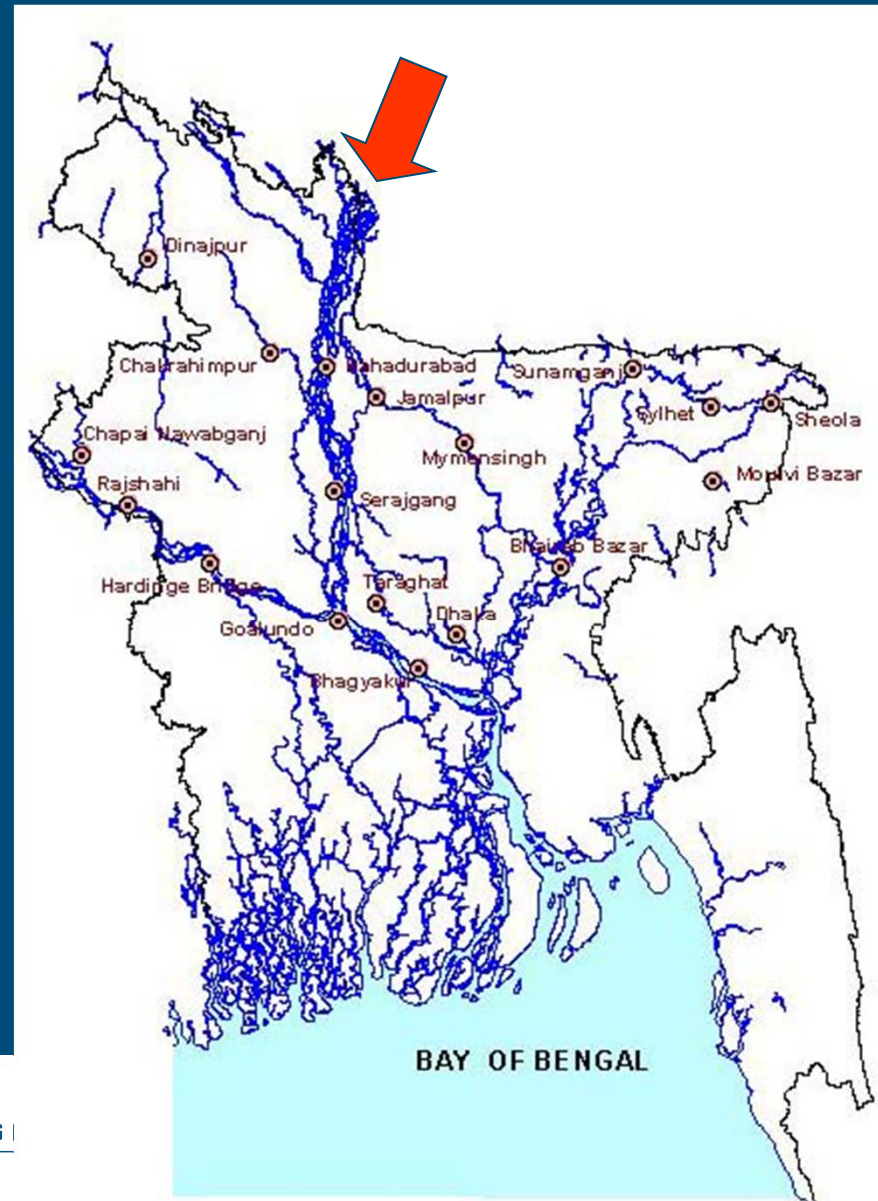
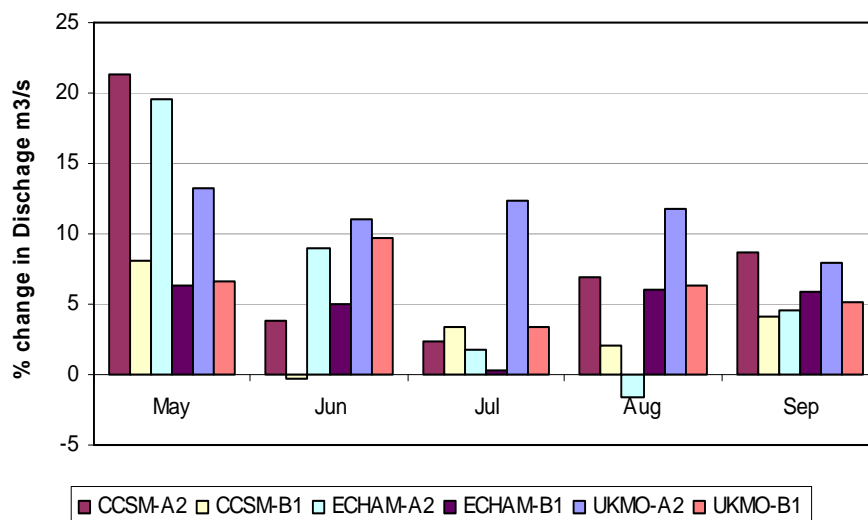


% change in inflow of Brahmaputra

2030 change in Brahmaputra inflow

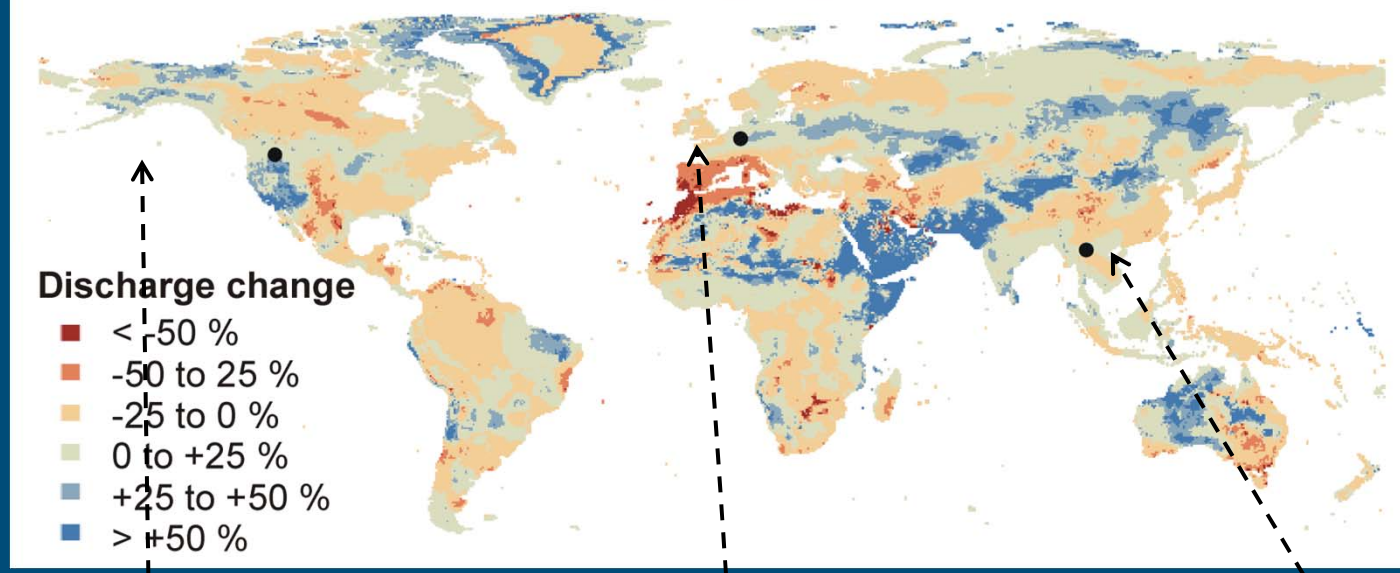


2050 change in Brahmaputra inflow

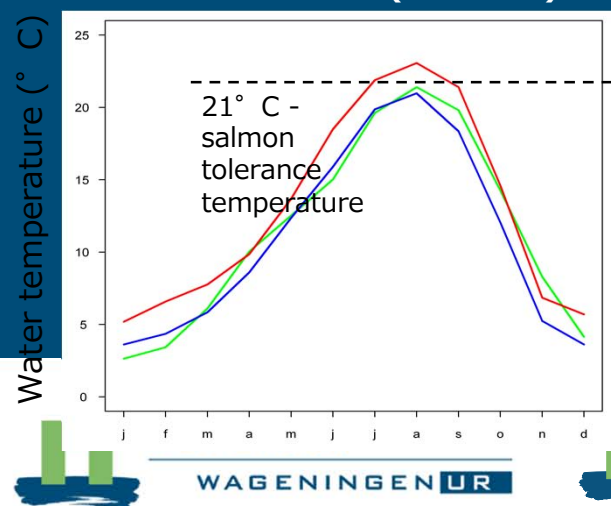


Future changes in discharge and water temperatures

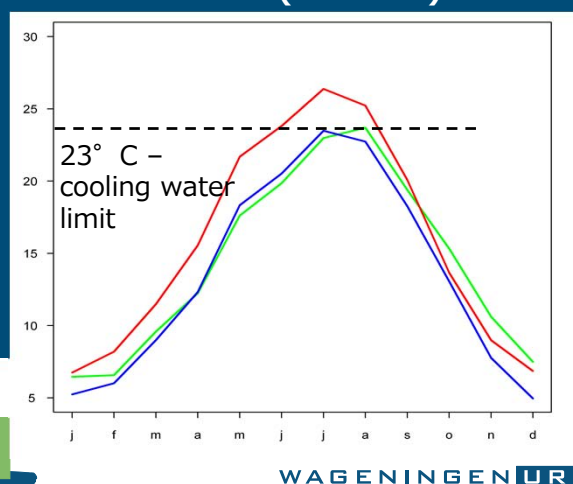
Relative changes in mean annual river discharge globally
ECHAM5 A2



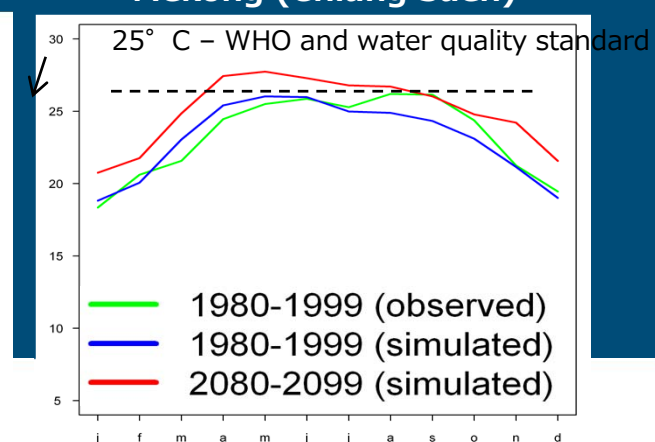
Columbia (Anatone)



Rhine (Koblenz)



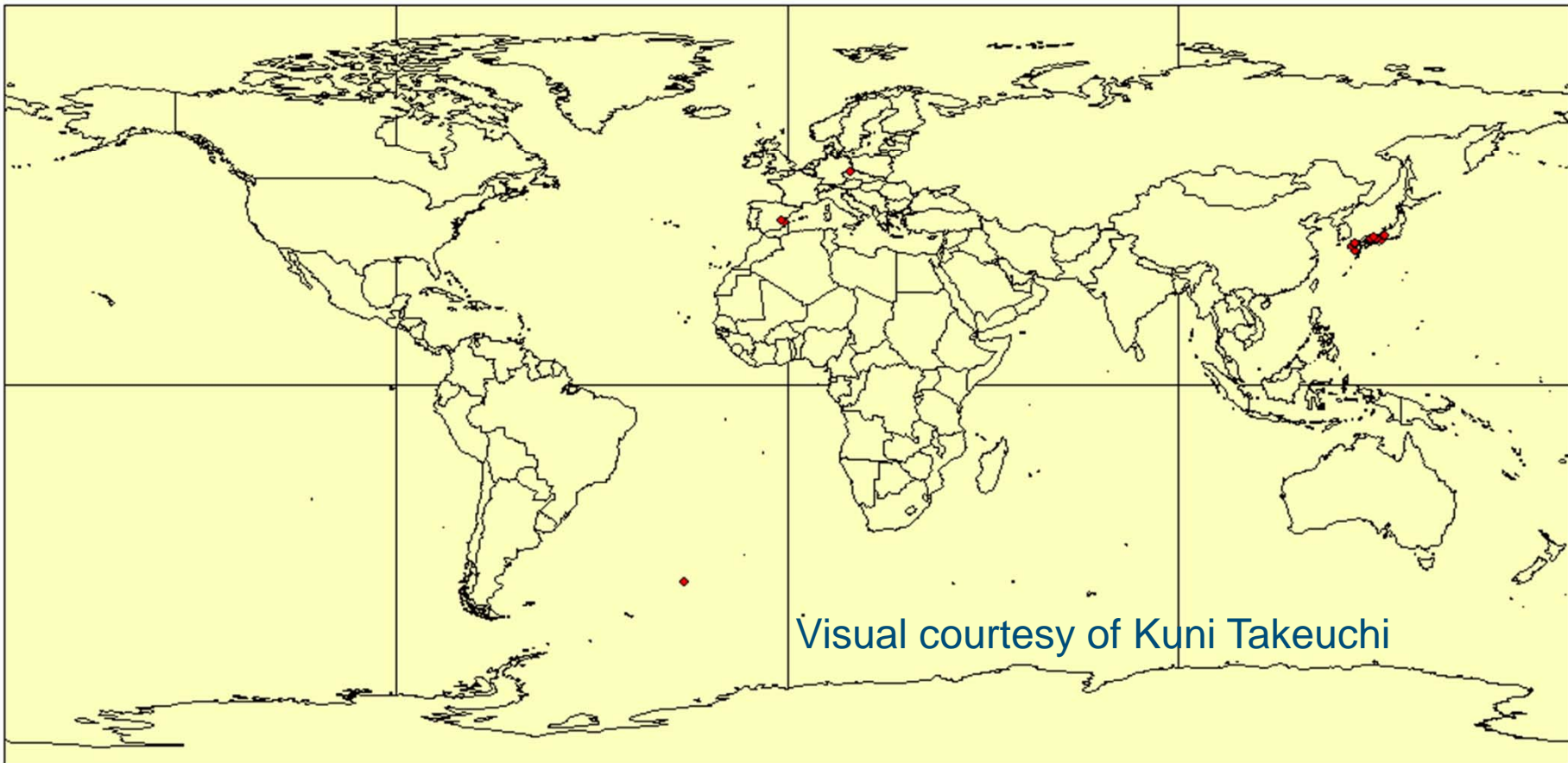
Mekong (Chiang Saen)



Global Reservoir Database

Location (lat./lon.), Storage capacity, Area of water surface,
Purpose of dam, Year of construction, ...

～1750年

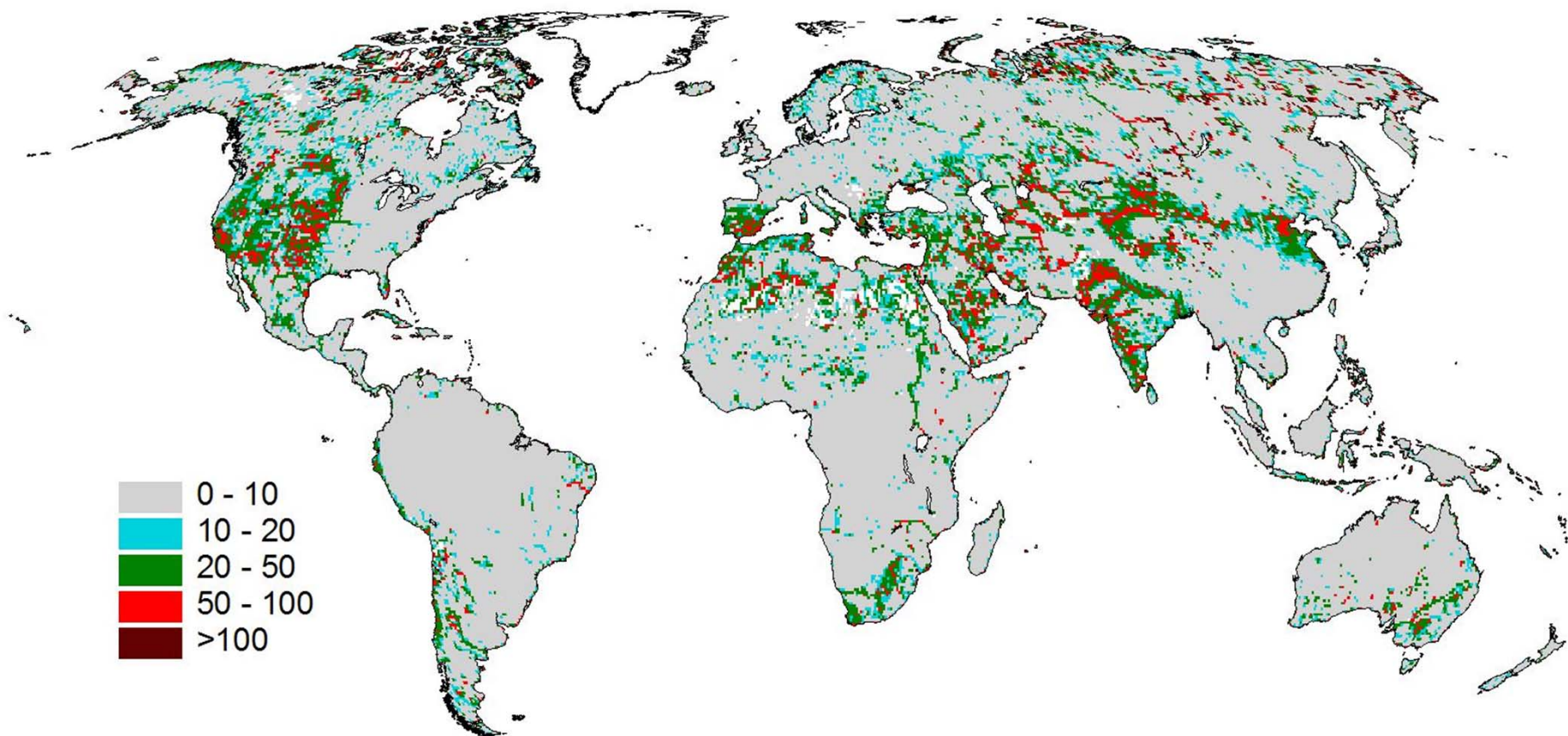


Alteration of river flow regimes due to withdrawals and reservoirs

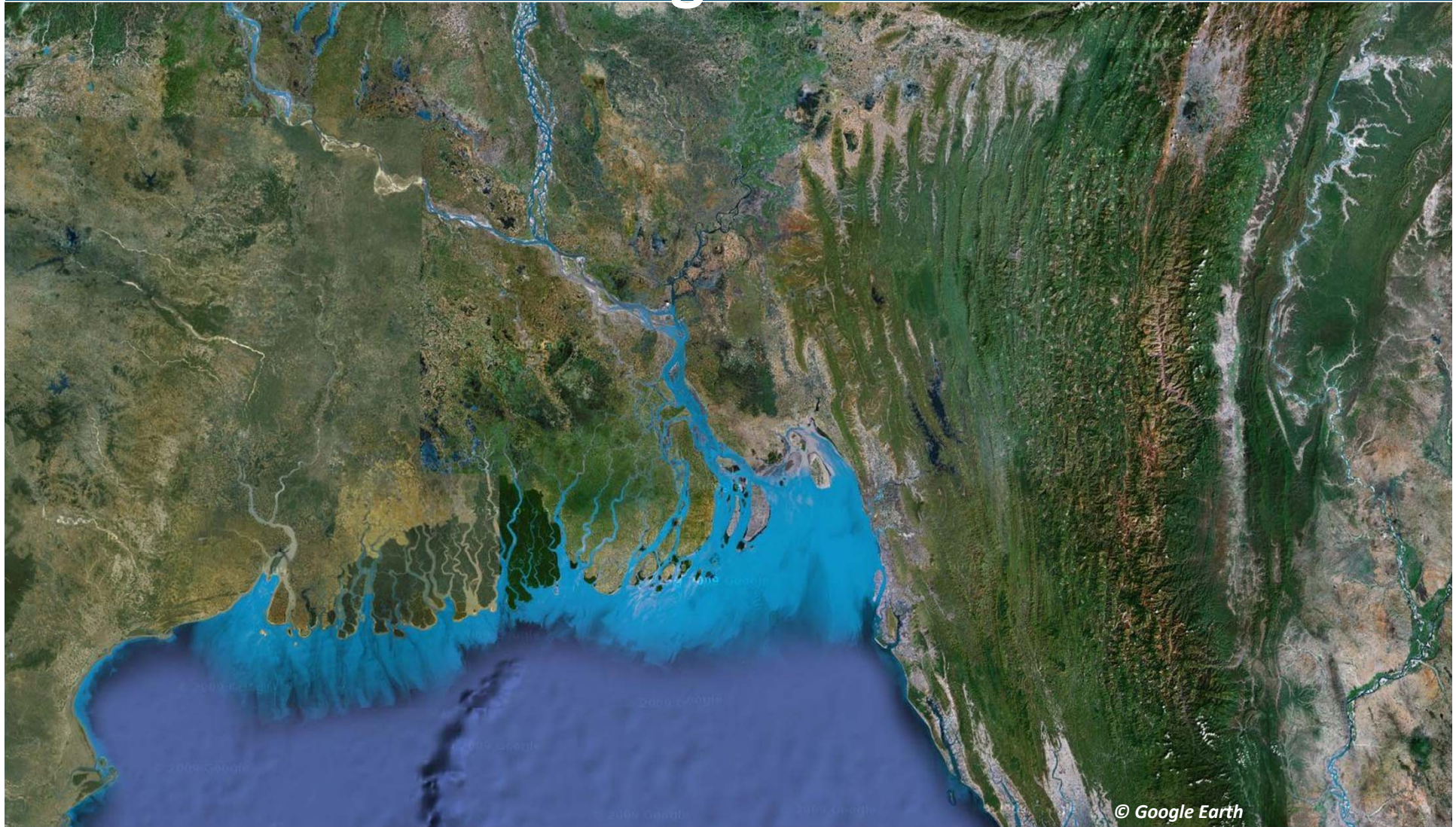
WaterGAP analysis based on "Range of Variability" approach of Richter et al. (1997)

Change in seasonal regime

Average absolute difference between 1961-1990 mean monthly river discharge under natural and anthropogenically altered conditions, in %



Bangladesh



ALTERRA
WAGENINGEN UR



WAGENINGEN UNIVERSITY
WAGENINGEN UR