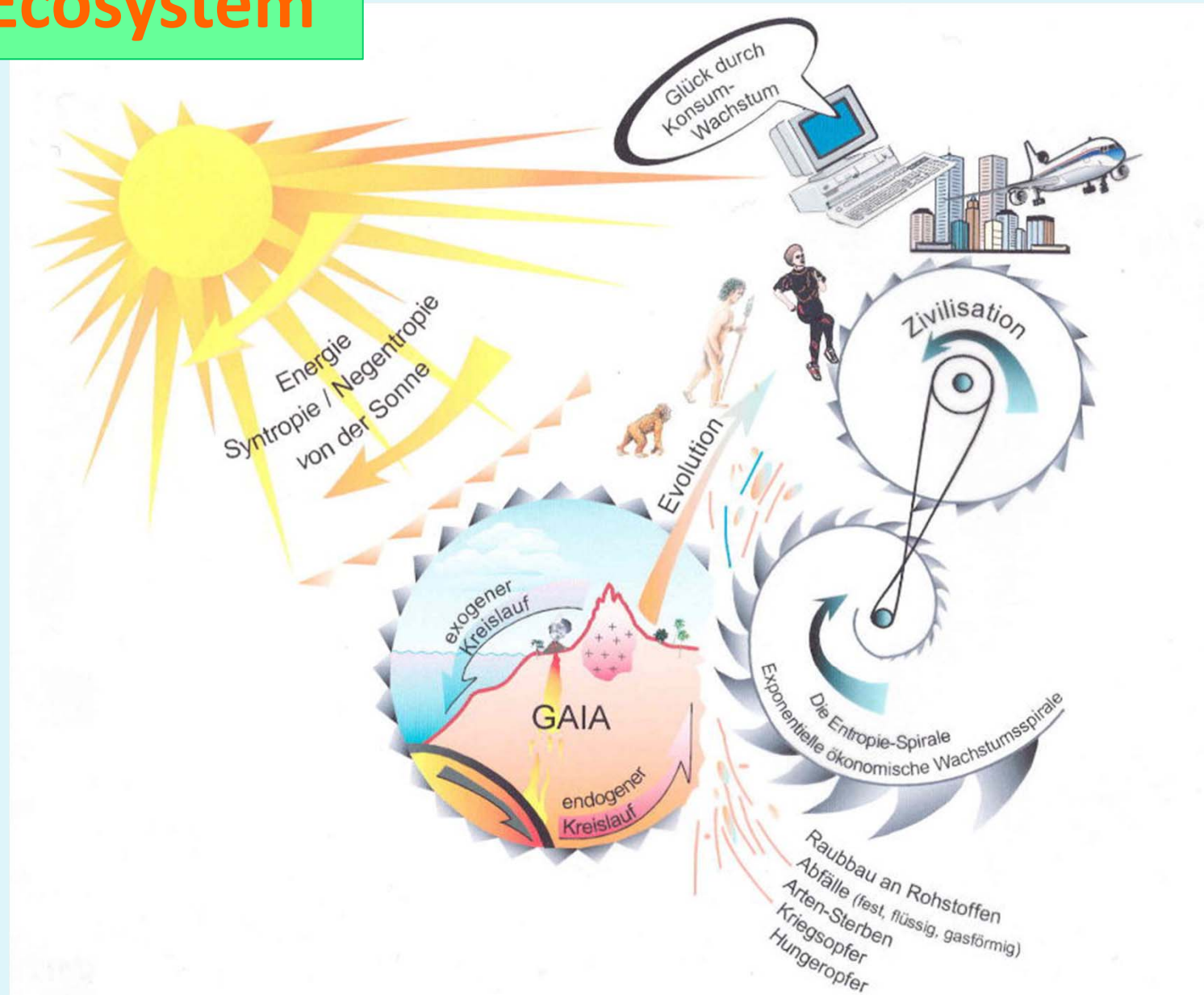
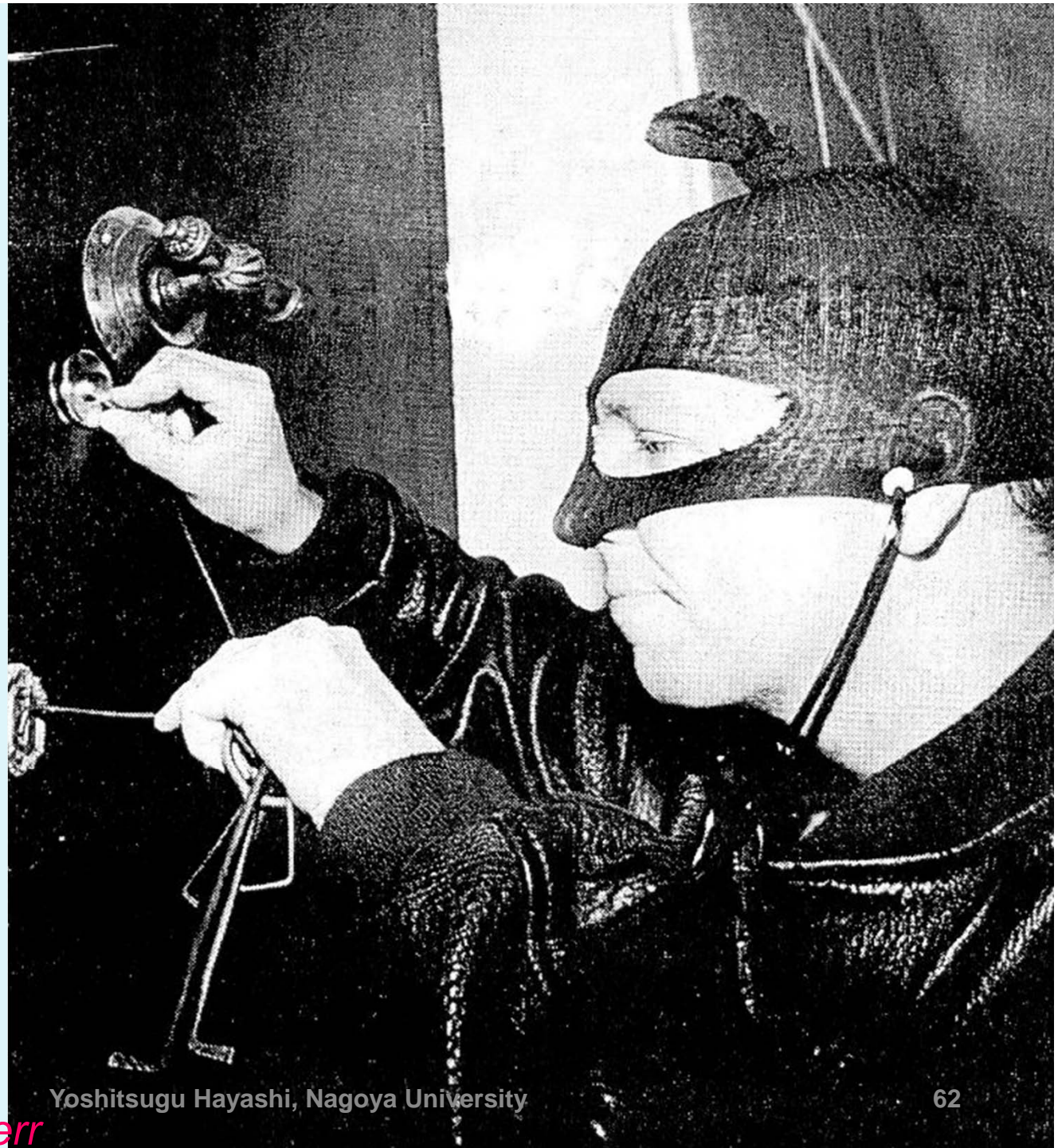


Geo-Ecosystem



“Bankrobber“

„Investment
in Welding
Equipment to
break open one
Safe of Nature
after the other“



Yoshitsugu Hayashi, Nagoya University

62

Source: Hans-Peter Duerr

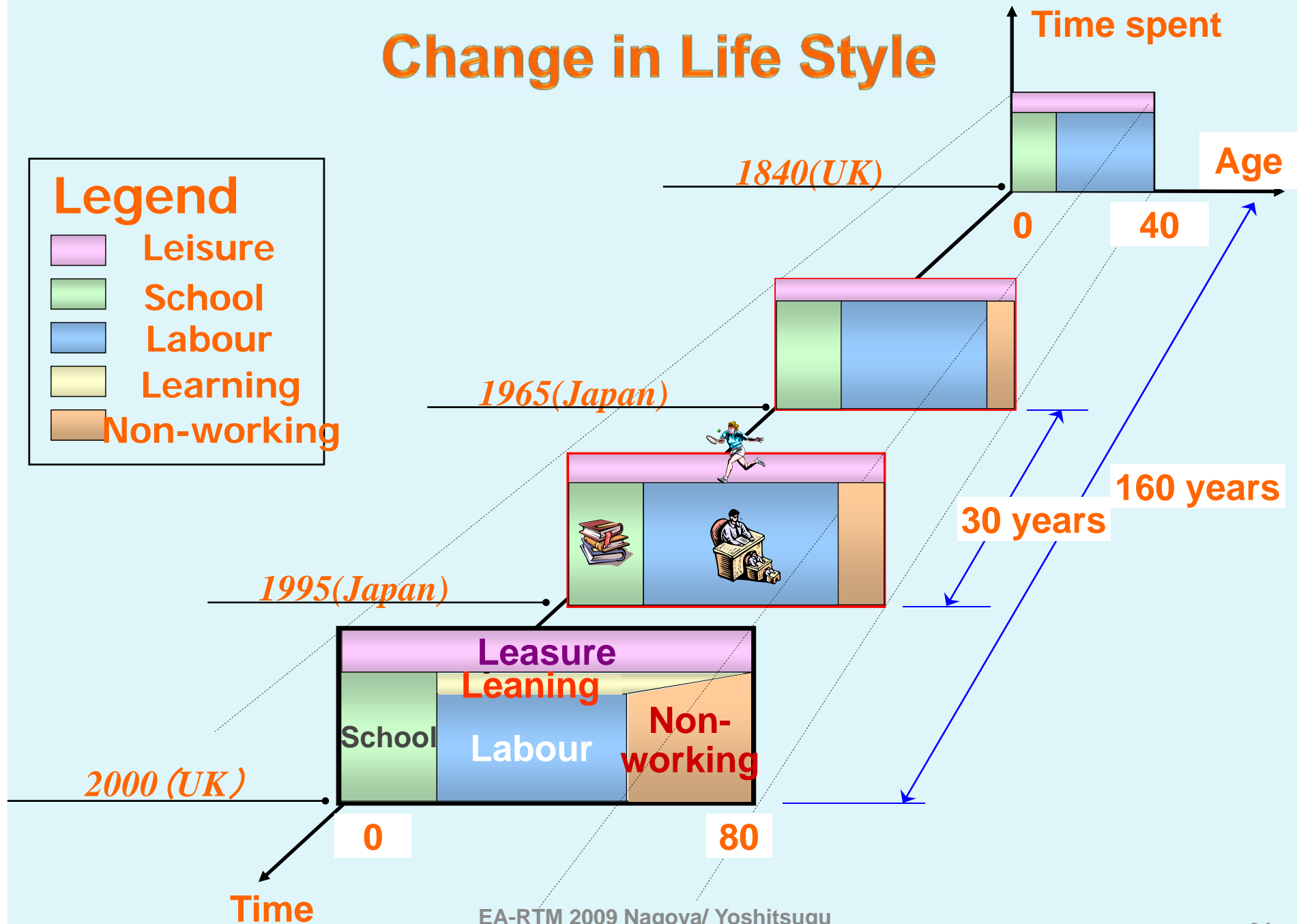
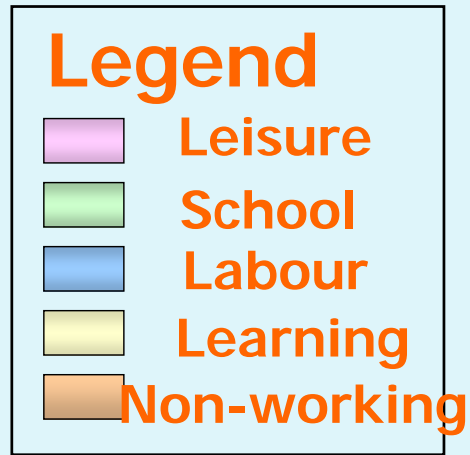


“Biosystem”

Many people think they are the crown of creation and jump around on top of the card house. They do not recognize that cards are collapsing and falling out, and that, hence, their own foundation is seriously endangered.

Fotomontage: Seidel/Weidlich

Change in Life Style



【Goal】

Higher QOL

【Endogenous Condition】

< Domestic >
Low birth rate
Aging
IT

< Int'l >
Growth of Asia
Globalization
IT

Economy

Ecology

A. Economic Opportunity	B. Living & Cultural Opportunity	C. Amenity	D. Safety & Security	E. Burden on Environment
<ul style="list-style-type: none"> ● Opportunity for Income ● Accessibility to Agglomeration of Industries/Population 	<ul style="list-style-type: none"> ● Service ● Education/Culture ● Health/Medical Care ● Shopping/Service ● Amusement/Travel 	<ul style="list-style-type: none"> ● Housing ● District Landscape ● Nature of Region ● Identity of Region ● Comfortability / Punctuality of travel ● Time for leisure/cultural life 	<ul style="list-style-type: none"> ● Risk of Natural disaster ● Risk of Building / Facility disaster ● Risk of Chemical Pollution ● Risk of Traffic Accident ● Resource Preservation ● Criminal Rate 	<ul style="list-style-type: none"> ● Burden from Industry ● Burden from Domestic ● Burden from Transport ● Heat Island ● Noise

Residence in Shanghai



EA-RTM 2009 Nagoya/ Yoshitsugu
Hayashi, Nagoya University

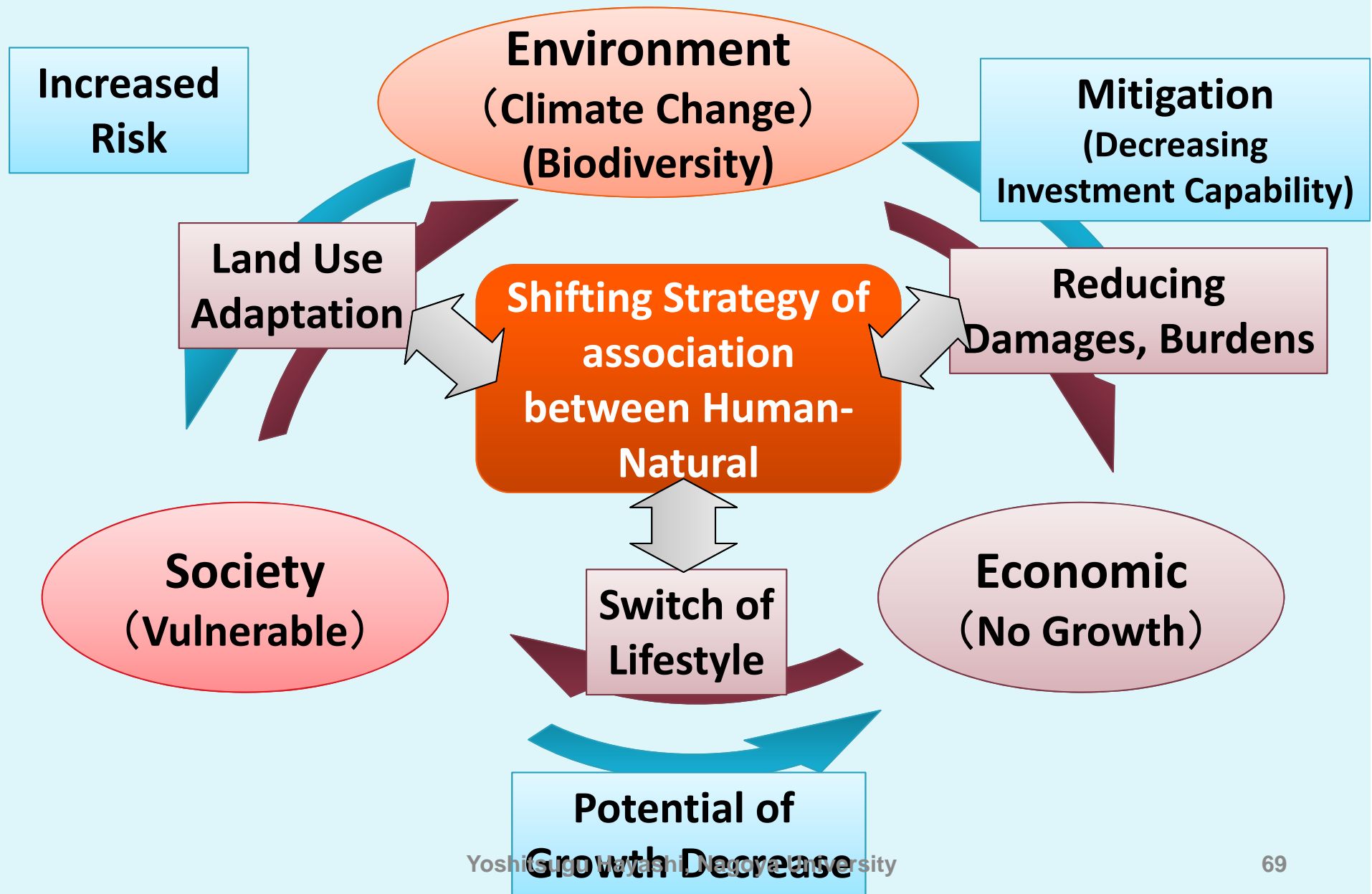
Shanghai Shoes-repair only ?



Shanghai 3 generations together



Mechanism for Sustainable Development



Where China will go ?

- Scale:
 - Population: China=Japanx10
- Speed:
 - Motorway Construction
 - China (8,000km/2years)=Japan (8,000km/46years)x20
 - GDP
 - China ?> Japan 9%/year (latter half of 20th Century) x75in50years
 - Aging (non-working/working generation)
 - 2.16/1.56=1.4 in 50 years
- Factor 200 ???