

International Conference on Science and Technology for Sustainability 2011
Building from Regional to Global Sustainability-Visions from Asia
September 14-16, 2011
Kyoto International Conference Center

This file is modified from the original by deleting 5 slides, to avoid conflicts of copy right.

Tet Yahara (Kyushu University; DIVERSITAS bioGENESIS)

**EVOLUTIONARY & HISTORICAL THINKING ON HUMAN-NATURE
INTERACTIONS AS A BASIS OF SUSTAINABILITY SCIENCE**

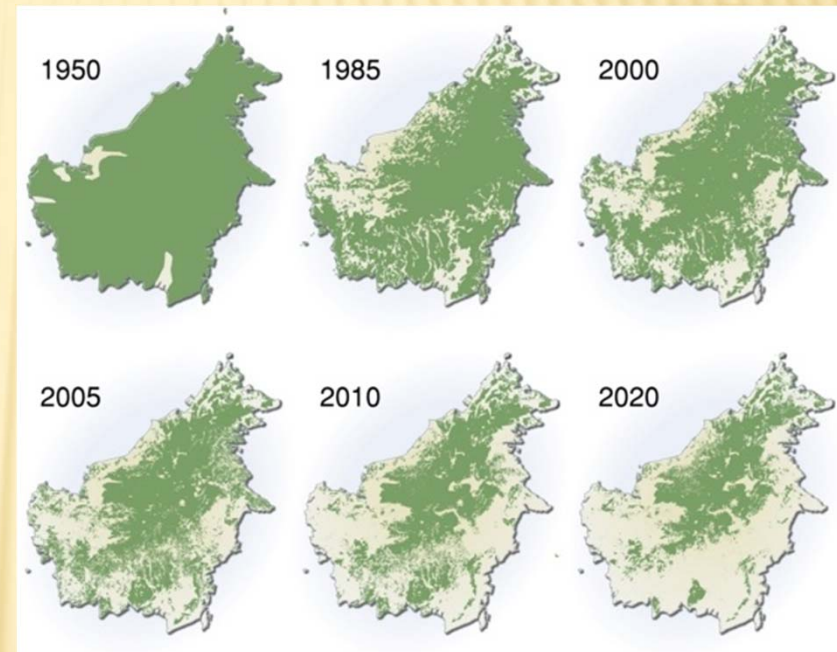
**人間・自然相互作用に関する進化的・歴史的思考：
持続可能性科学の基礎として**

OUTLINE

- ✘ A sad fact: biodiversity loss in Asia
 - + Rapid forest loss
 - + Rapid eutrophication
- ✘ The history of human-nature interactions
 - + Before agriculture
 - + In agricultural society
 - + After industrial revolution
- ✘ Five actions recommended for citizen

東南アジアにおける森林減少

FOREST LOSS IN SOUTH EAST ASIA



<http://maps.grida.no/region/geoasiap>

How rapidly biodiversity is being lost ? What will result in?

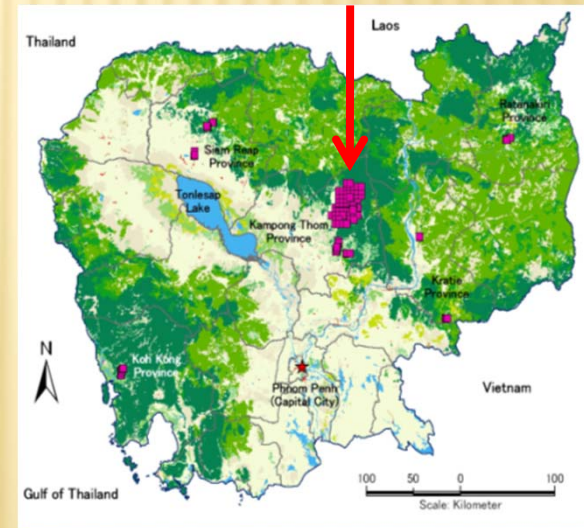
CASE STUDY: CAMBODIA



2010/01/12



2010/02/01 QuickBird2



<http://maps.grida.no/region/geoasiap>

Some permanent forest plots are logged or cleared