

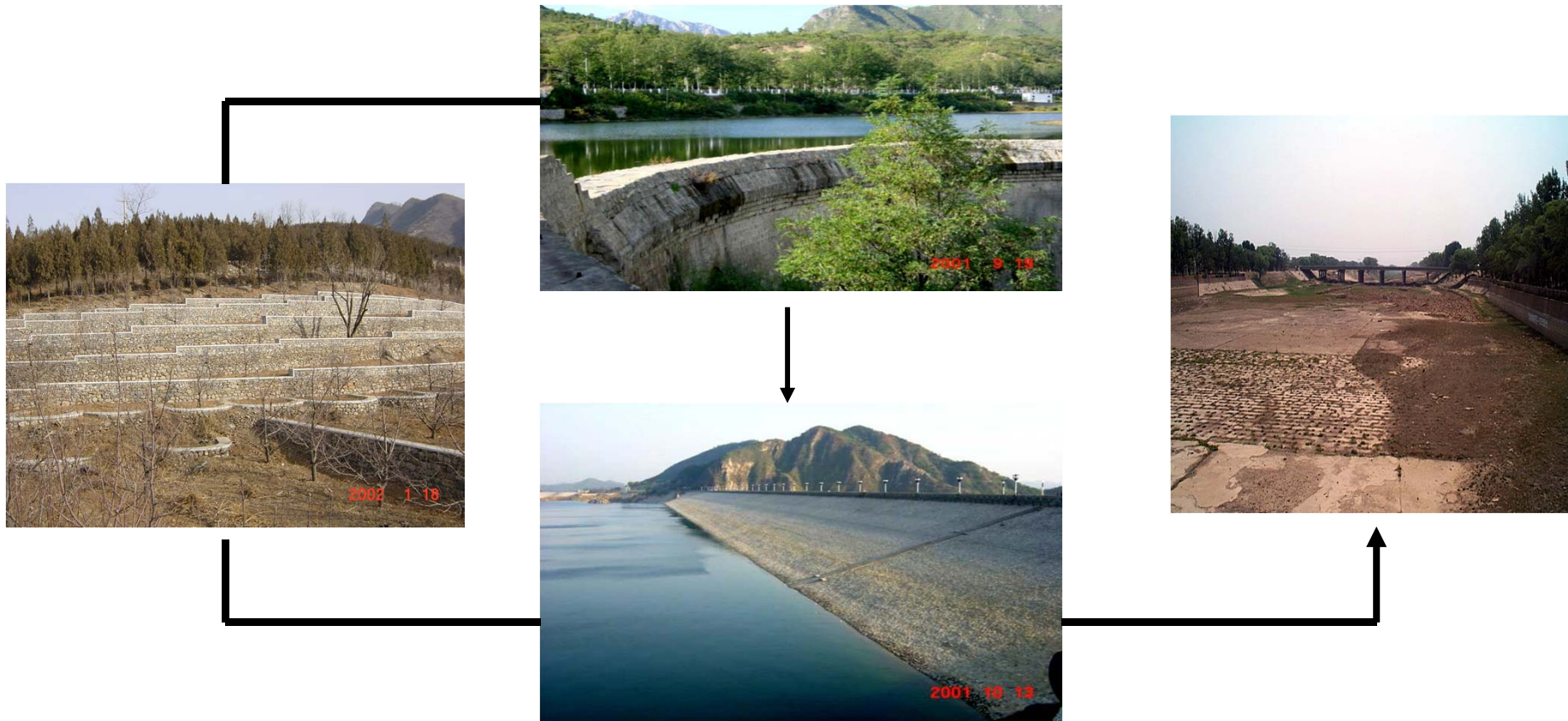
Urban development & over use of ground water



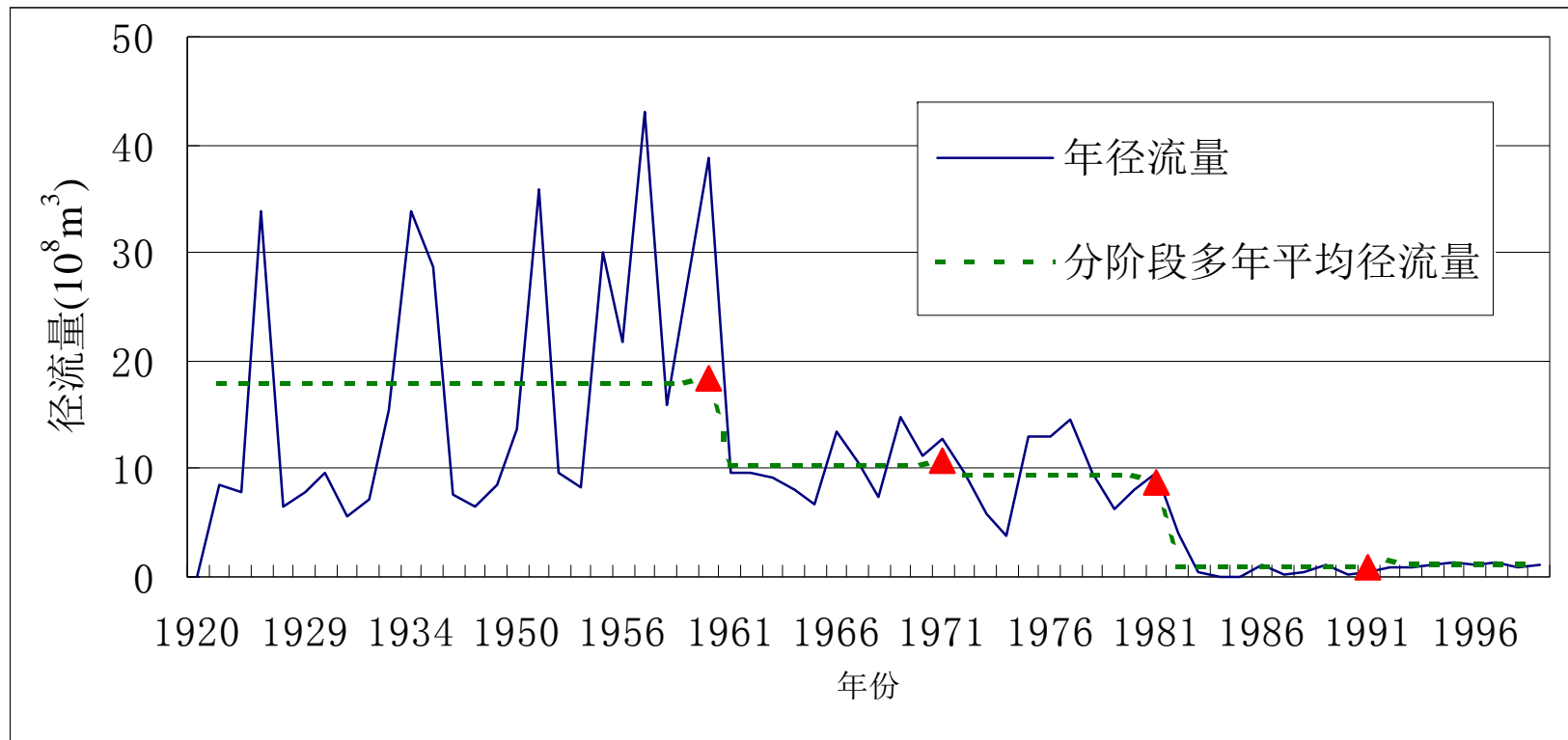
- **Big depth of ground water** concerted in urban area due to continue water using behavior in the cities



Building water projects, such as **reservoirs, water conservation projects**, is also reason to result in flow decrease / drying up in middle & downstream of river system.



An example of **annually runoff decline** in the Chaobai River observed at a downstream station, Beijing

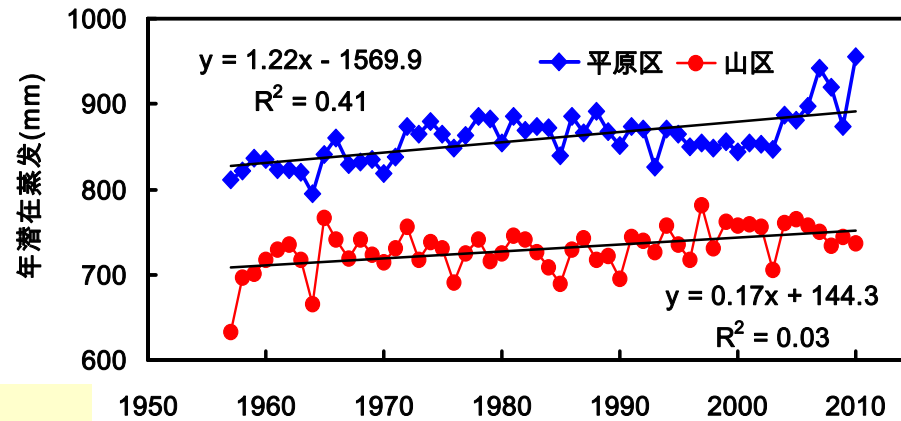


潮白河径流演化的阶段性

Fig.2 Five Periods of Annual Runoff in Chaobaihe River

Vision II: Climate change has still an impact to regional hydrological process

1. Air Temperature increase result in ET change



2. The analysis of profit and loss, P-ET, in agriculture shows crop water shortage in recently 10 years :

华北 ET_p 变化趋势

