

Selling Points of SLUAS

- Extensive field surveys reveal the problems that are otherwise difficult to identify.

The ground surveys cover substantial areas in Monsoon Asia, including those in China, India, Japan, Far-east Russia, Thai, Philippines, Indonesia and Myanmar.

- Land use change is viewed at longer as well as shorter terms.

Presents ample historical facts, viewpoints, methods and research findings useful for the discussion of problems related with land use changes and sustainable land use.

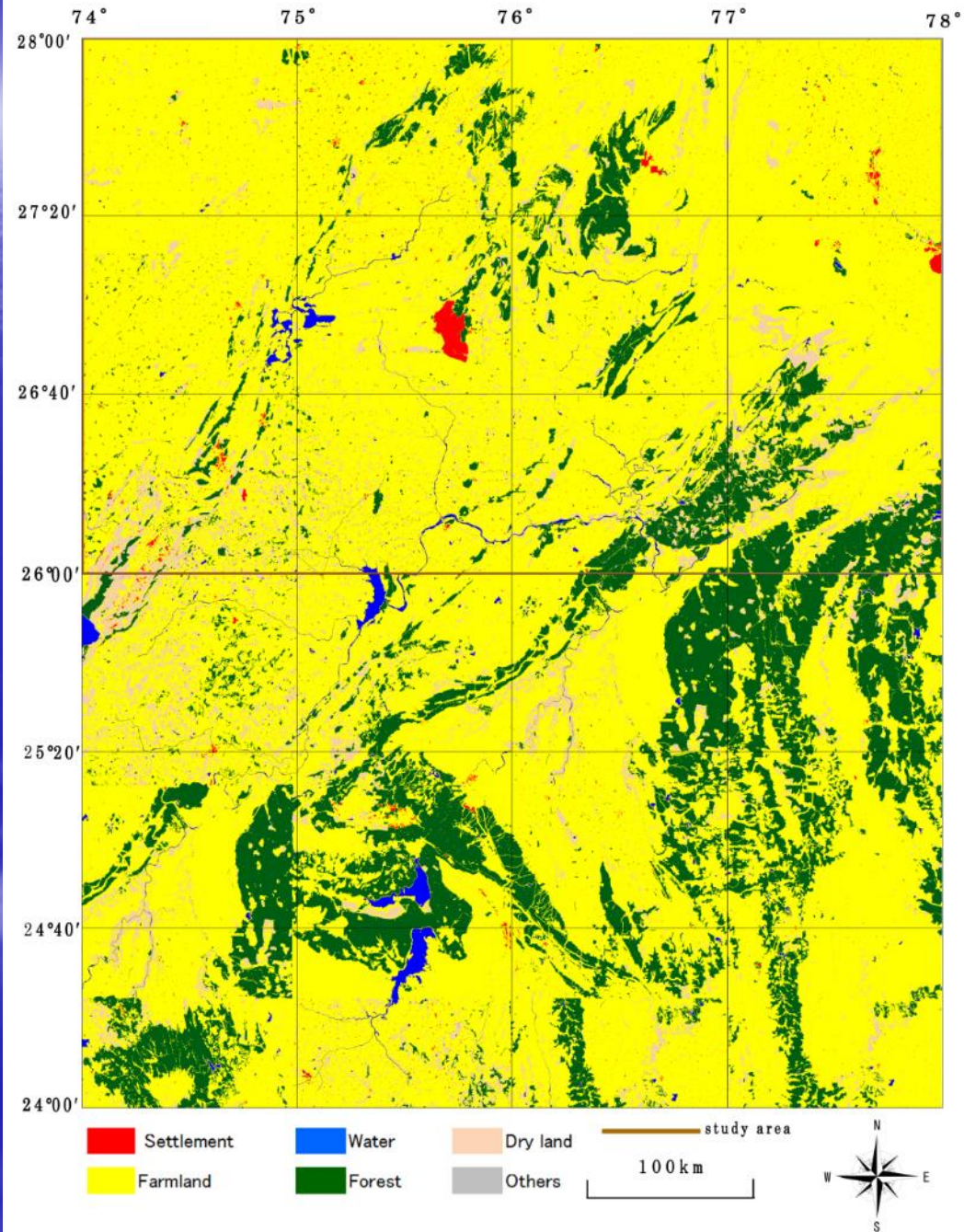
- The existing serious problems related with sustainable land use are highlighted.

They include rapid urbanization, land use conflicts, and land-related disasters.



Land use in part of Rajasthan in ca.2010

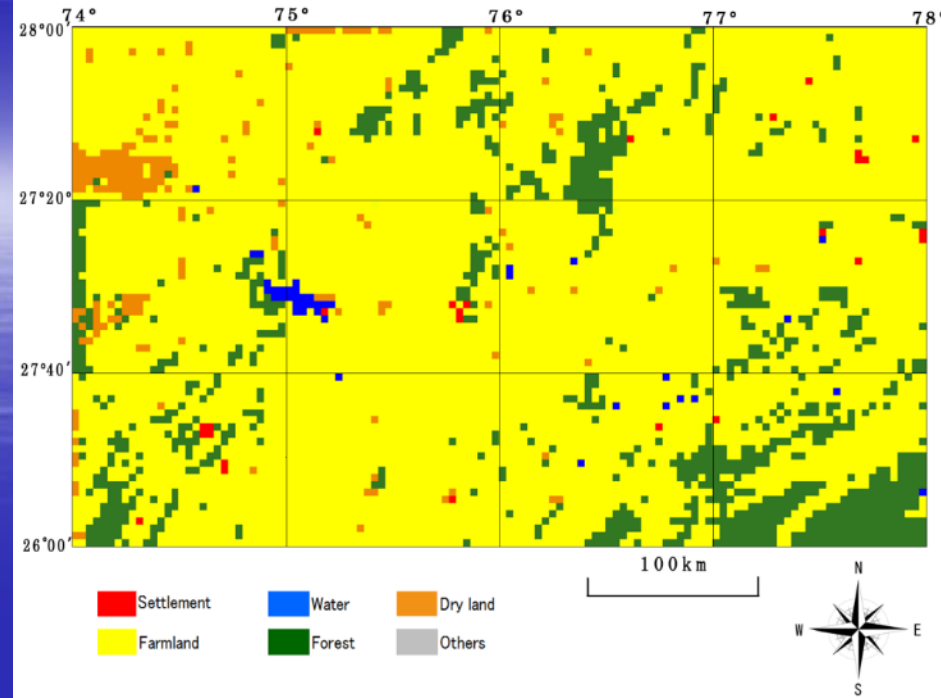
(Based on Google Map)



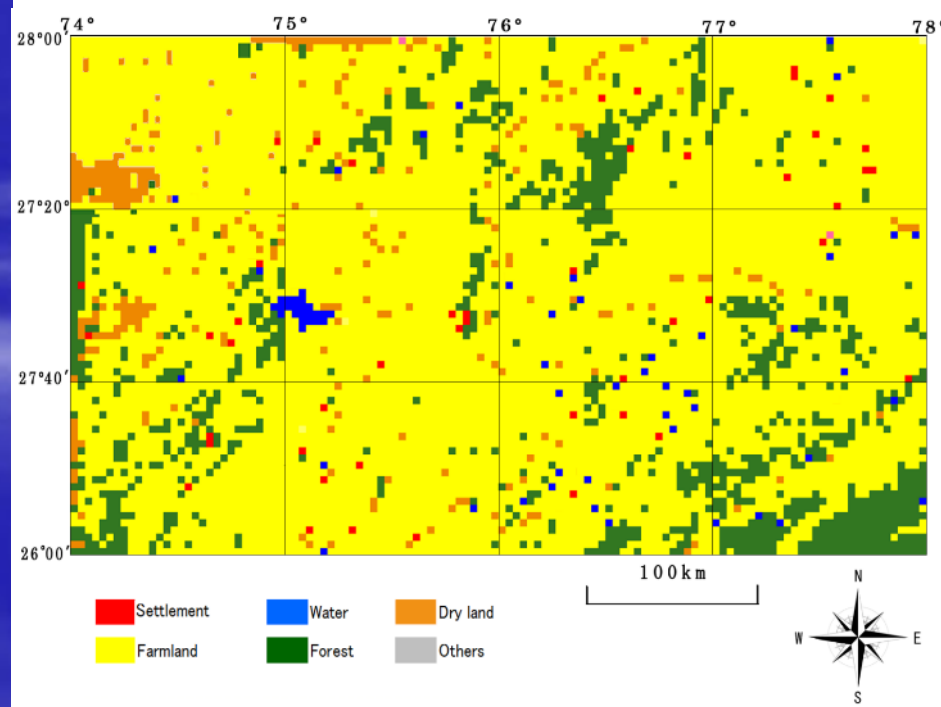
1:200,000 topo map
(ca.1985) Source:
mapstor

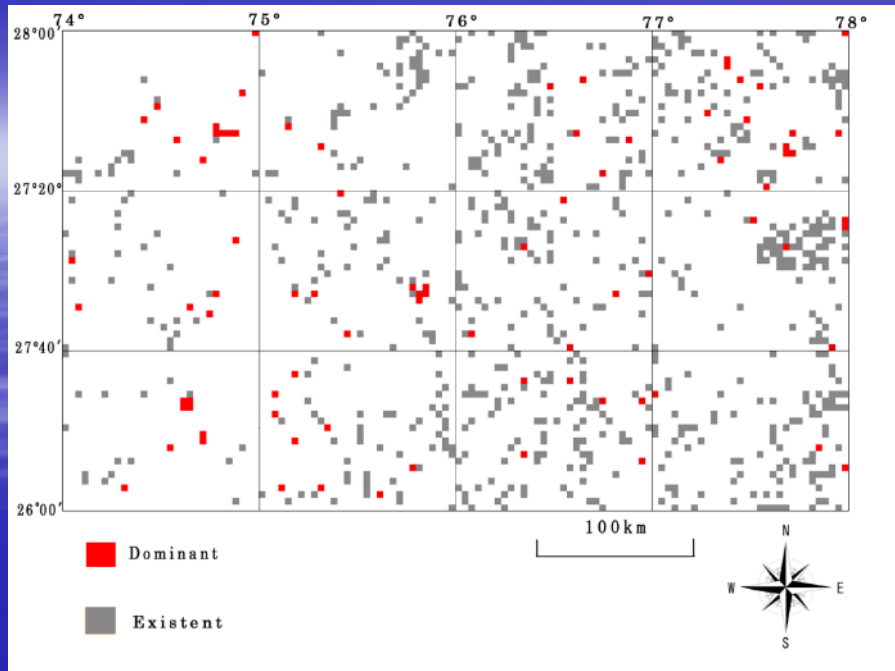


Land use in part of Rajasthan in
ca.1985
(Based on mapstor)

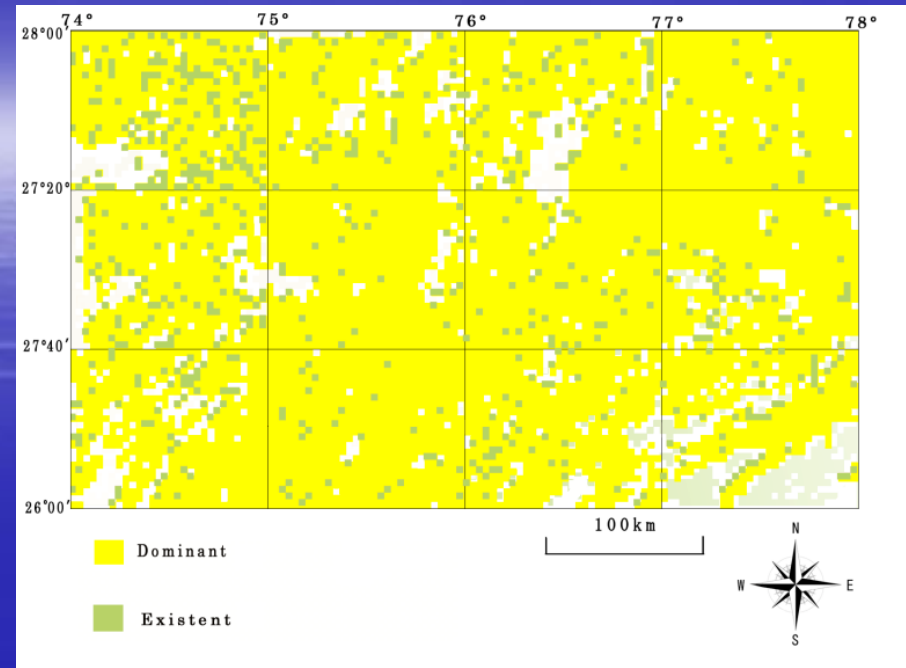


Land use in part of Rajasthan in ca.1985
at top left corner of the grid square
(Based on mapstor)

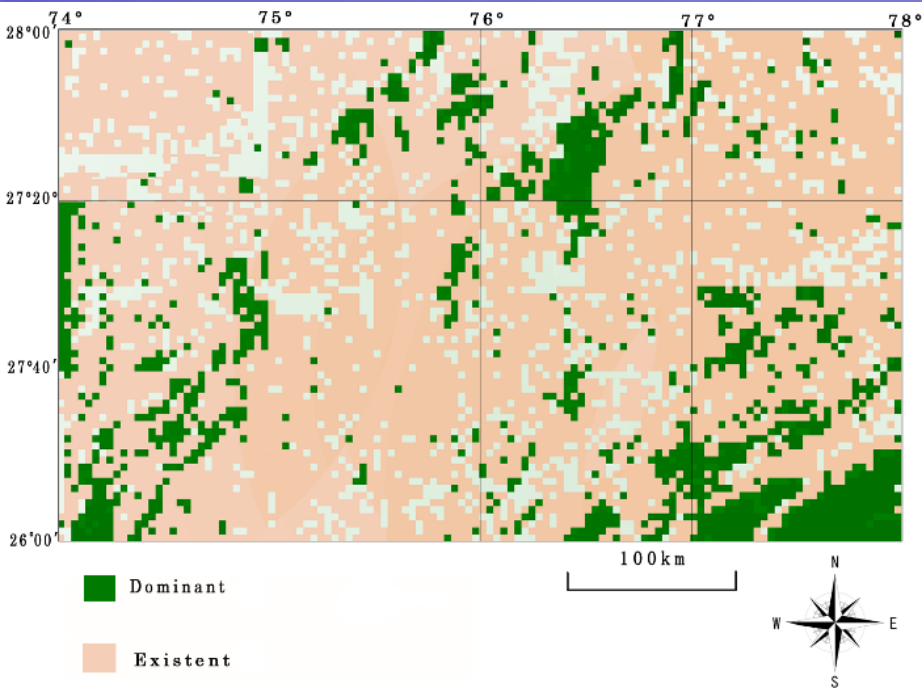




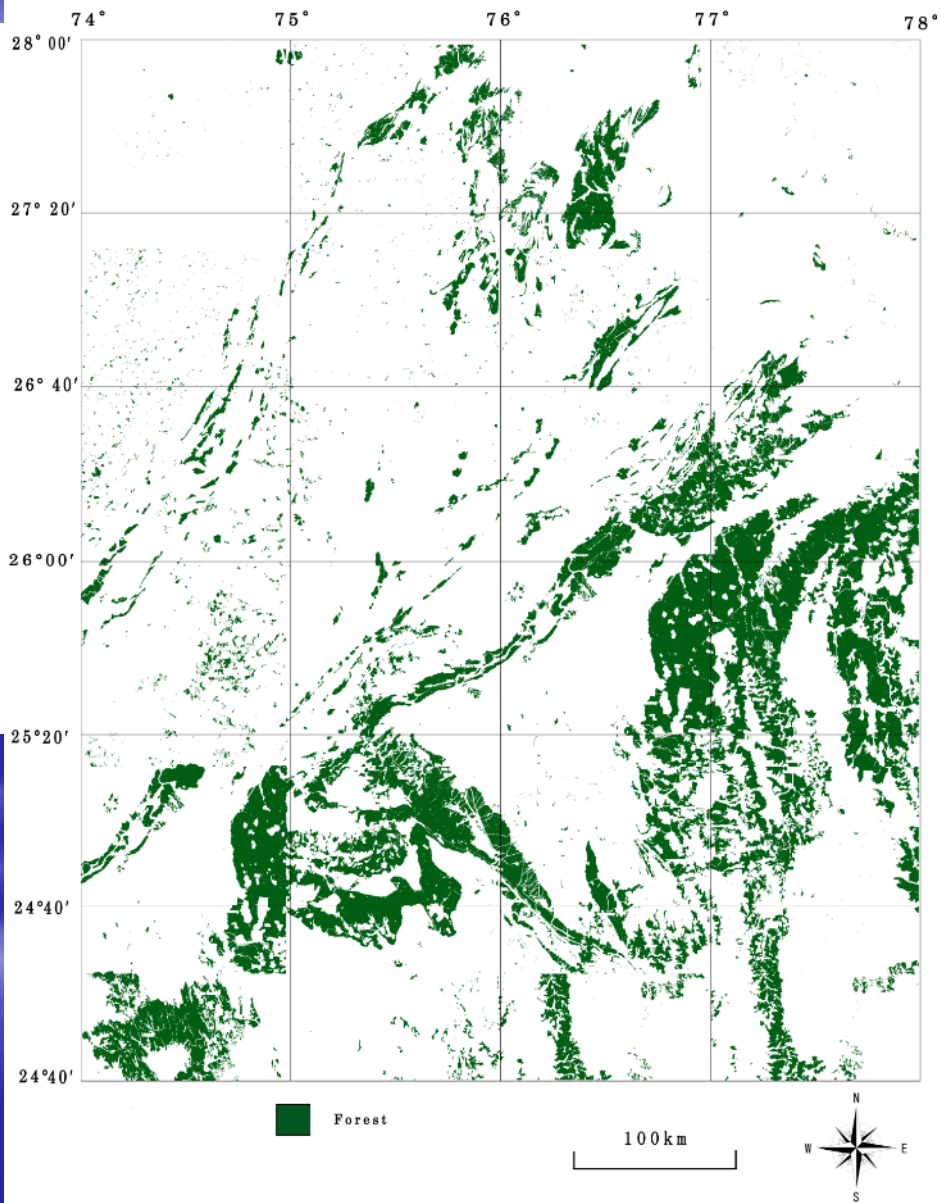
Settlement in ca. 1985
based on mapstor



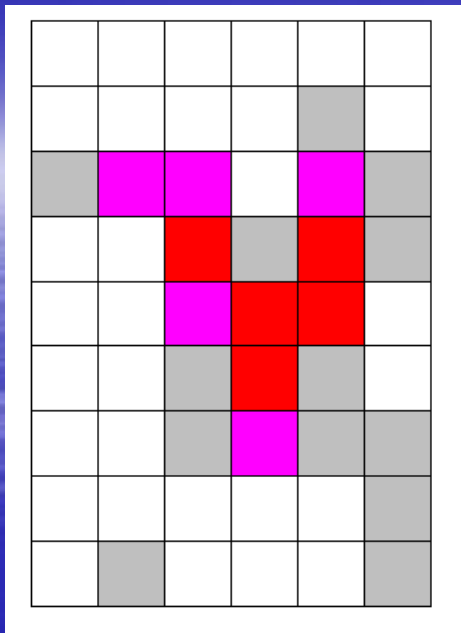
Agricultural in ca.1985
based on mapstor



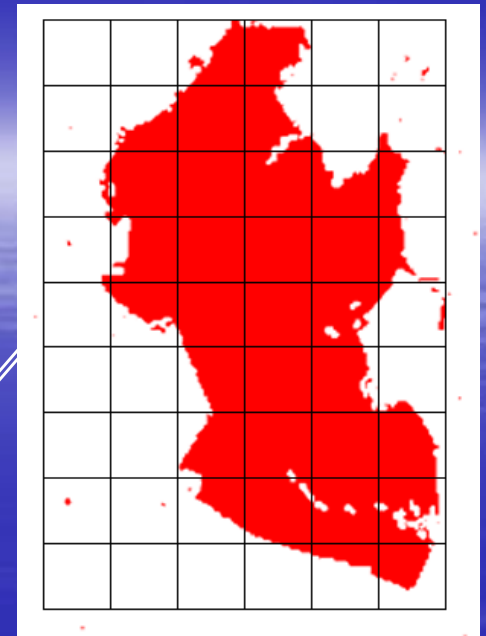
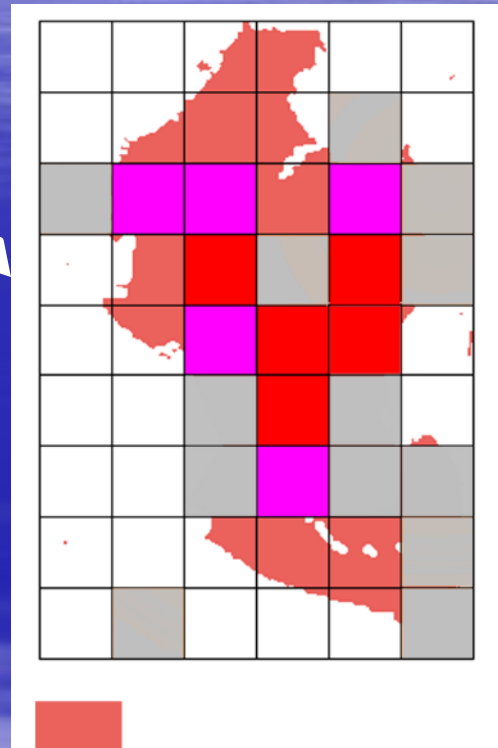
Forest in ca.1985 Based on mapstor



Forest in ca.2010 Based on Google Map



Jaipur ca. 1985



Jaipur ca. 1985

Extension of Jaipur from ca. 1985 to ca.2010

Land use in the study area

| Land Use/Cover | ca.1985 | | ca.2010 | |
|----------------|-----------------|------|-----------------|------|
| | km ² | % | km ² | % |
| Water | 1517.9 | 1.7 | 1544.4 | 1.8 |
| Settlement | 661.9 | 0.8 | 2577.0 | 2.9 |
| Forest | 11781.6 | 13.4 | 12134.7 | 13.8 |
| Agricultural | 60452.6 | 68.5 | 56834.3 | 64.4 |
| Dry land | 13396.7 | 15.2 | 14791.0 | 16.8 |
| Other | 132.4 | 0.2 | 194.2 | 0.2 |
| Total | 88252 | 100 | 88252 | 100 |

Rajasthan photo, ca.2014

