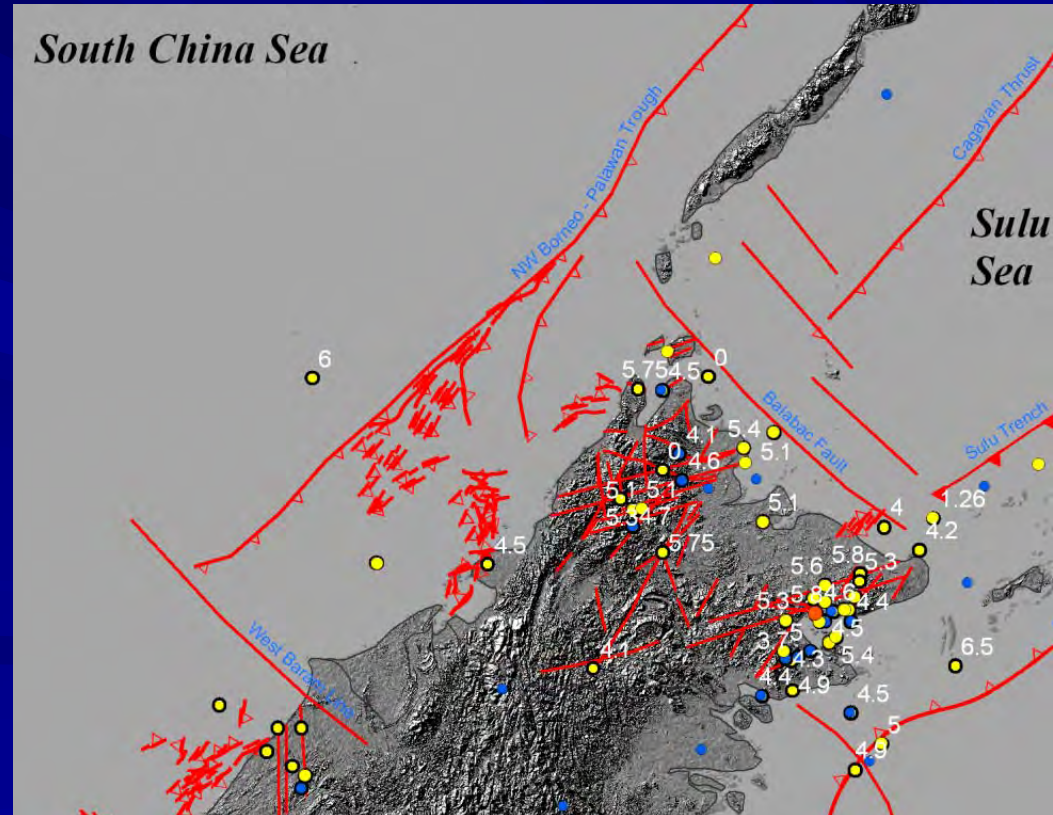


Local Earthquakes in Sabah

■ Since 1897; In Sabah :

- 27 local light to moderate e/q were recorded onshore & 32 e/q offshore (South China Sea, Sulu Sea and Celebes Sea).
- Magnitudes : 4 (detection limit of older seismograph) to 5.8 MB; only four were of magnitude 6 or greater and located offshore.
- Epicenters are concentrated on the east coast of Sabah, around Lahad Datu and Ranau area. The e/q are mainly shallow depth (<70 Km) whereas those offshore tend to be intermediate (70-200 Km) in depth.



Local Earthquakes & Active Faults in Sabah

- A number of potentially active faults were identified in Sabah, namely:
 - The Lahad Datu Faults, strikes (*after Felix Tongkul*) or Tabin Fault (*after Tjia*)
 - The Mensaban Faults, strikes WNW-ESE (Kundasang-Ranau Area) (*after Tjia*)
 - Crocker Fault Zone, strike NNE (*after Tjia*)
- Local Earthquake events in Sabah are attributable to movements along these fault zones.

1991 Ranau Earthquake



PP 52/1/91 Vol. XXXVII No. 141 Kota Kinabalu, Tuesday, 28th May, 1991

It measured 5 on the Richter Scale - higher than 5 can cause damage, says Dept boss

Sunday's tremors worst so far

Enck David Lee

Man, 59, raping

KOTA KINABALU, M... charged in the Magistrate's Court next Monday, for his conviction. Pang was arrested the... Prosecuting officer Inap... Court next Monday, for his Magistrate Caroline Bee... case today.

GREETINGS: A Buddhist readers from the Mar... Publishing House Sdn Bhd and Express and the Overseas Chinese publication tomorrow. Publication

INSIDE

• Sabah Umno says its up to KL to set up the Sabah Barisan panel —PAGE 2

By RUBEN SARIO

KOTA KINABALU, Mon. — The Meteorological Services Department here said that the five strong tremors felt in several parts of the State yesterday was among the most severe to hit Sabah. Department Director Chang Kung Chew said data collected by the department's seismology stations indicated that the tremors yesterday measured 5 on the Richter scale. Geological Survey Department director David Lee said any tremor above 5 on the Scale is strong enough to cause damage to buildings. According to Enck David Lee, the magnitude of the tremors yesterday

Teacher's Flat, S.M.K. Mat Salleh, Ranau

NE-SW Trending Active Fault Zone near Silabukan



Road needs frequent repair works

The Mensaban Fault Zone (Kundasang - Ranau Area, Sabah, East Malaysia)



27

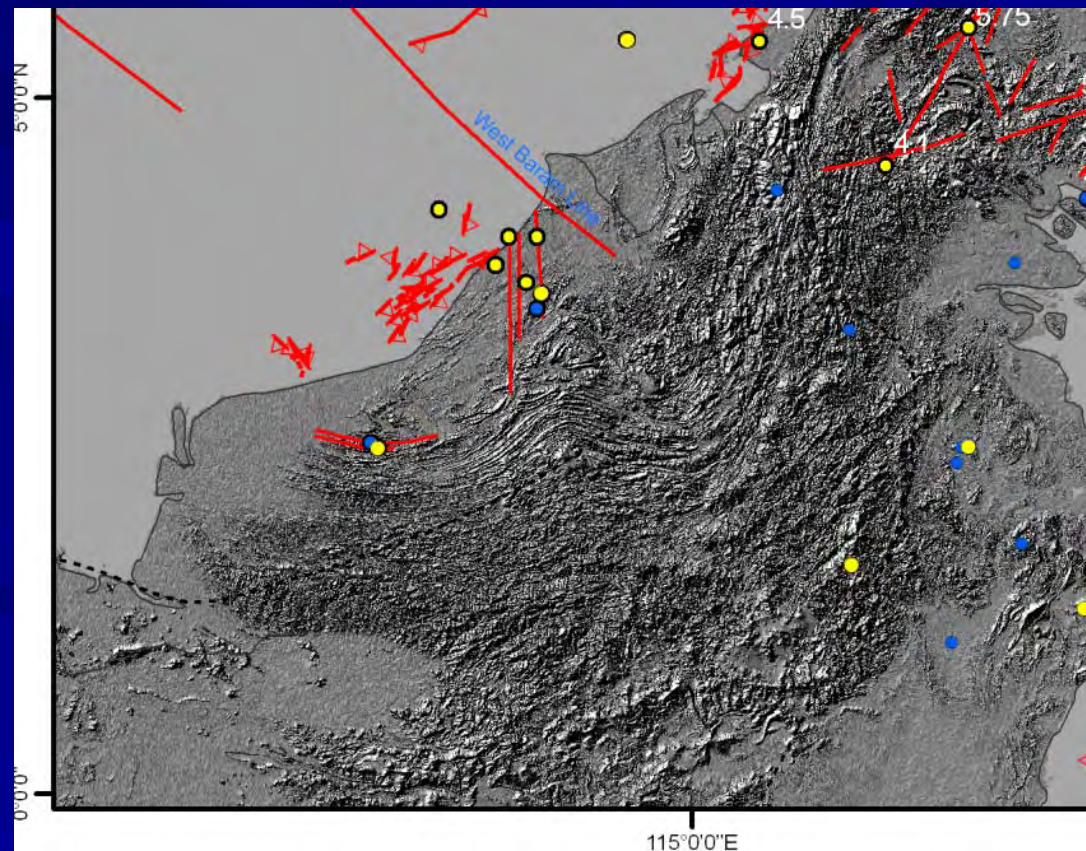
27.05.2004 15:50

27.05.

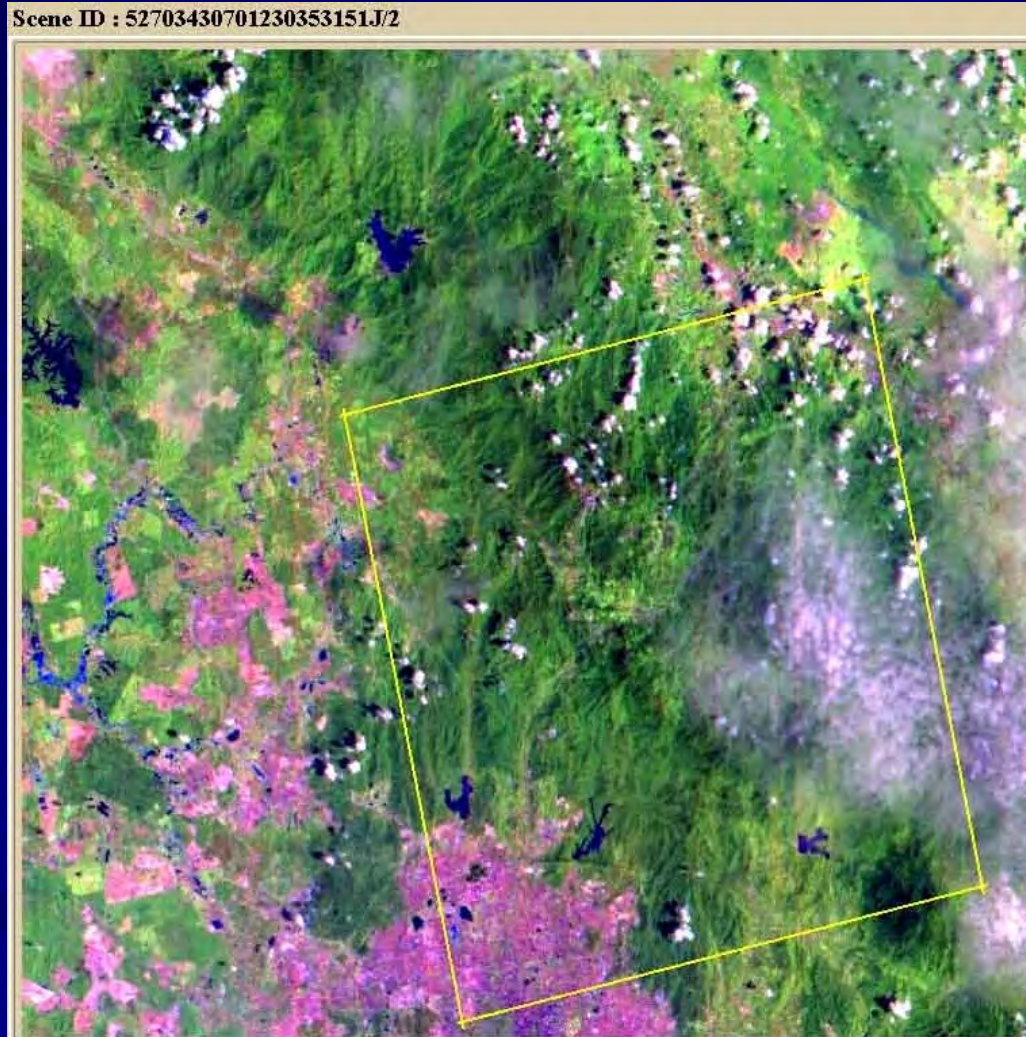
Local Earthquakes in Sarawak

■ Since 1897..

- In Sarawak : about 21 earthquakes with magnitudes ranging from 3.5 to 5.3 were recorded with a maximum intensity observed of VI.



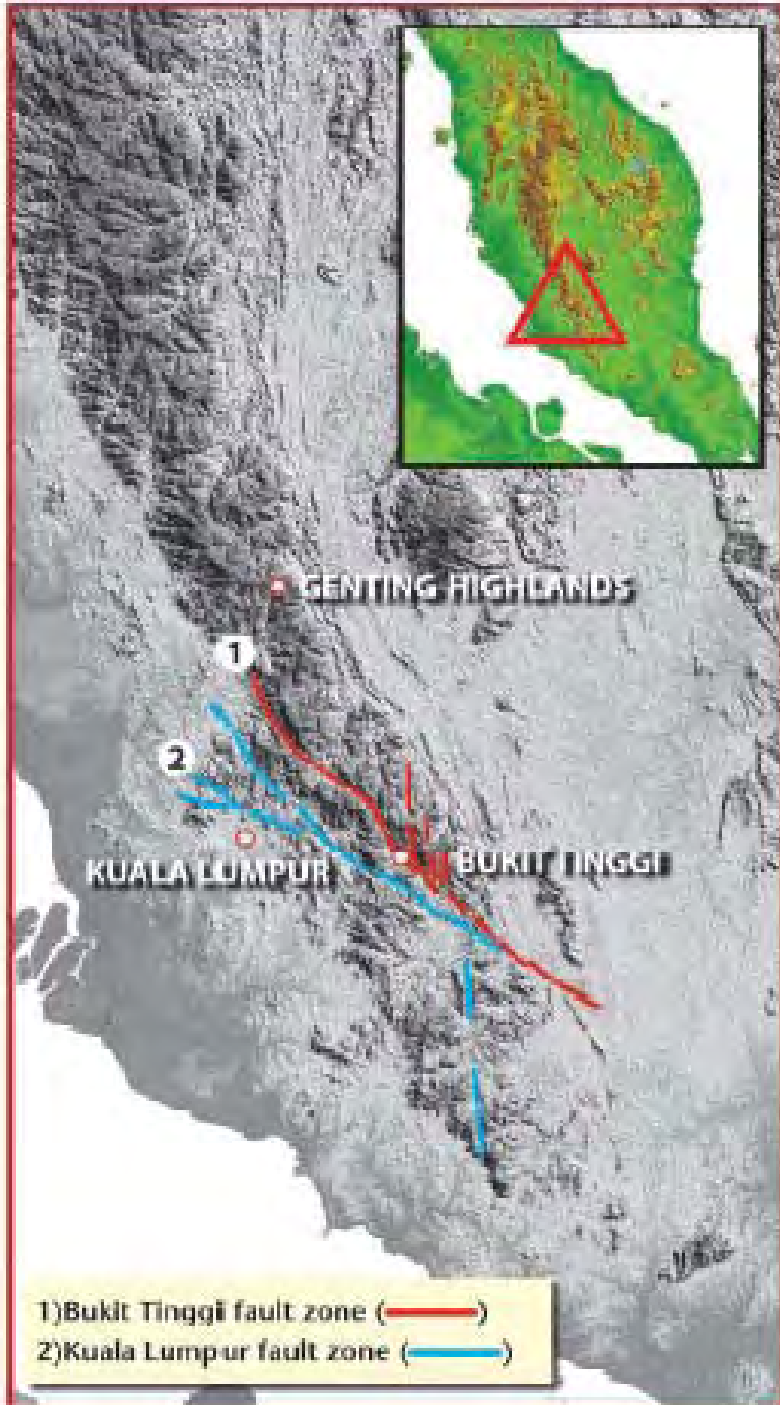
Most Recent development on Earthquake in Malaysia....



Bukit Tinggi Earthquakes

Bukit Tinggi Earthquakes:

- several very mild to mild earthquakes (13 tremors until 31st Jan 2008) have been reported from this area since Nov 30, 2007.
- The magnitude varies between 2.5-3.5 on Richter scale.
- The earthquake is believed to be attributed to the reactivation of the Bukit Tinggi Fault Zone.



Bukit Tinggi Fault Zone

