

Program at a Glance

Theme: "Role of Science for Society: Strategies towards SDGs in Asia"
Organizers: Science Council of Japan, Science Council of Asia
Date: 5th-7th December 2018
Venue: Science Council of Japan

Day 1

Session	A	B	C	D
Venue	Assembly Hall	Conference Room 5-A (5F)	Conference Room 5-C (5F)	Council Room (2F)
Opening Ceremony				
9:10	Welcome Remarks President of SCJ			
	Opening Remarks President of SCA (TBD)			
9:30	Congratulatory Address Guest of Honor			
Keynote Speech				
9:30	Keynote Speech 1			
10:30				
Break 10:30 -11:00				
11:00		[Parallel Session B1] Theme2 (1)	[Parallel Session C1] Theme5 (1)	[Parallel Session D1] Theme3
12:30				
Lunch 12:30 -14:00				
Poster Session 13:00-14:00 (at Conference Room 6-A (6F))				
14:00		[Parallel Session B2] Theme7	[Parallel Session C2] Theme8	SCA Management Board Meeting (SCA Management Board Members only)
15:30				
Coffee Break 15:30 -16:00				
16:00		[Parallel Session B3] Theme 4	[Parallel Session C3] Theme 1 (1)	SCA Joint Project Workshop
17:30				
Break 17:30 -18:30				
Reception organized by SCJ (Invitation only) 18:30-20:30				
Adjourn 20:30				

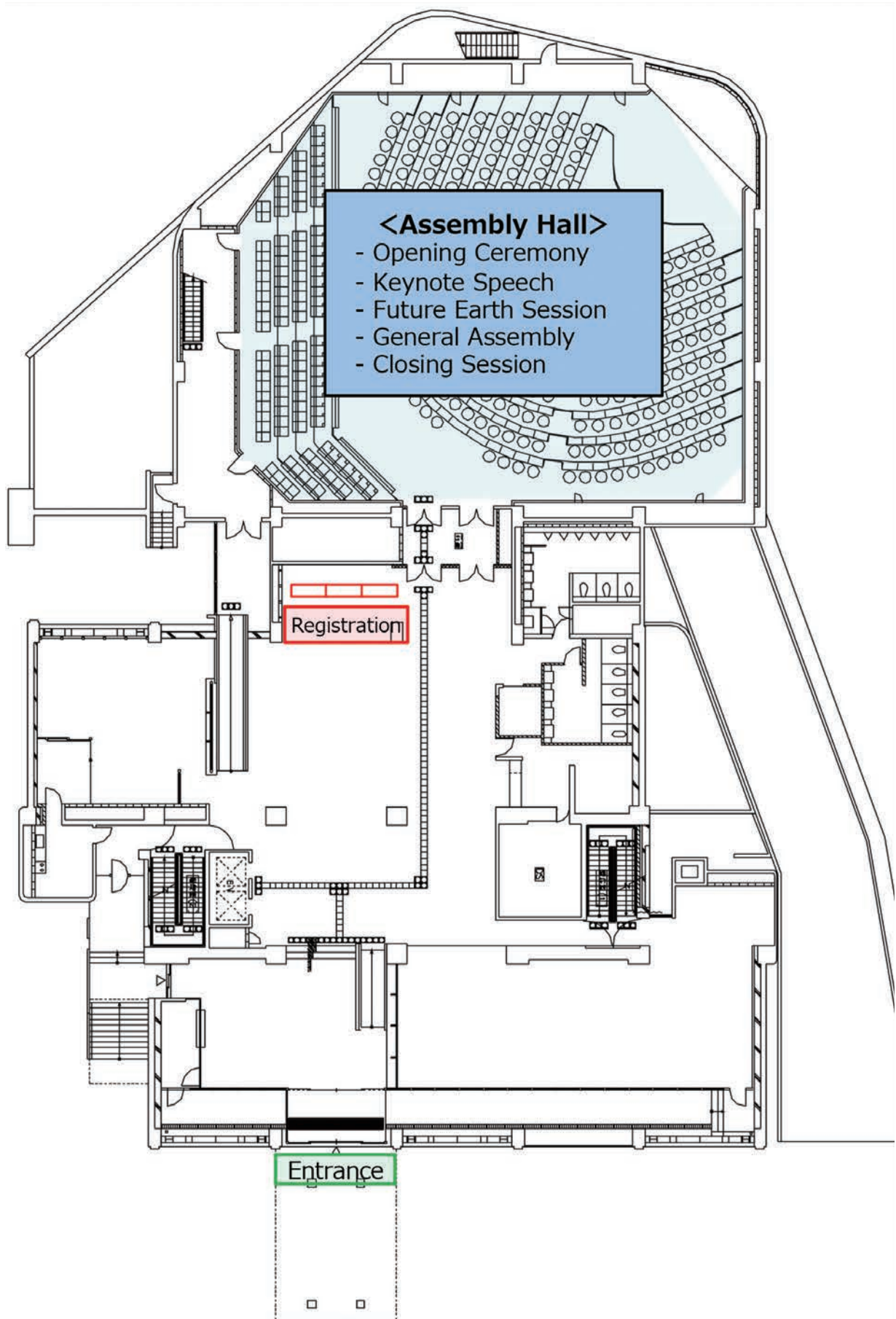
Day 2

Keynote Speech				
9:00	Keynote Speech 2			
10:30				
Break 10:30 -11:00				
11:00		[Parallel Session B4] Theme 9	[Parallel Session C4] Theme 10	[Parallel Session D2] Theme 6
12:30				
Lunch 12:30 -14:00				
Poster Session 13:00-14:00 (at Conference Room 6-A (6F))				
14:00	Future Earth Sessions			
15:30				
Coffee Break 15:30 -16:00				
16:00		[Parallel Session B5] Theme1 (2)	[Parallel Session C5] Theme 5 (2)	Committee of Science and Society and Young Academy of Japan Session
17:30				
Adjourn 17:30				

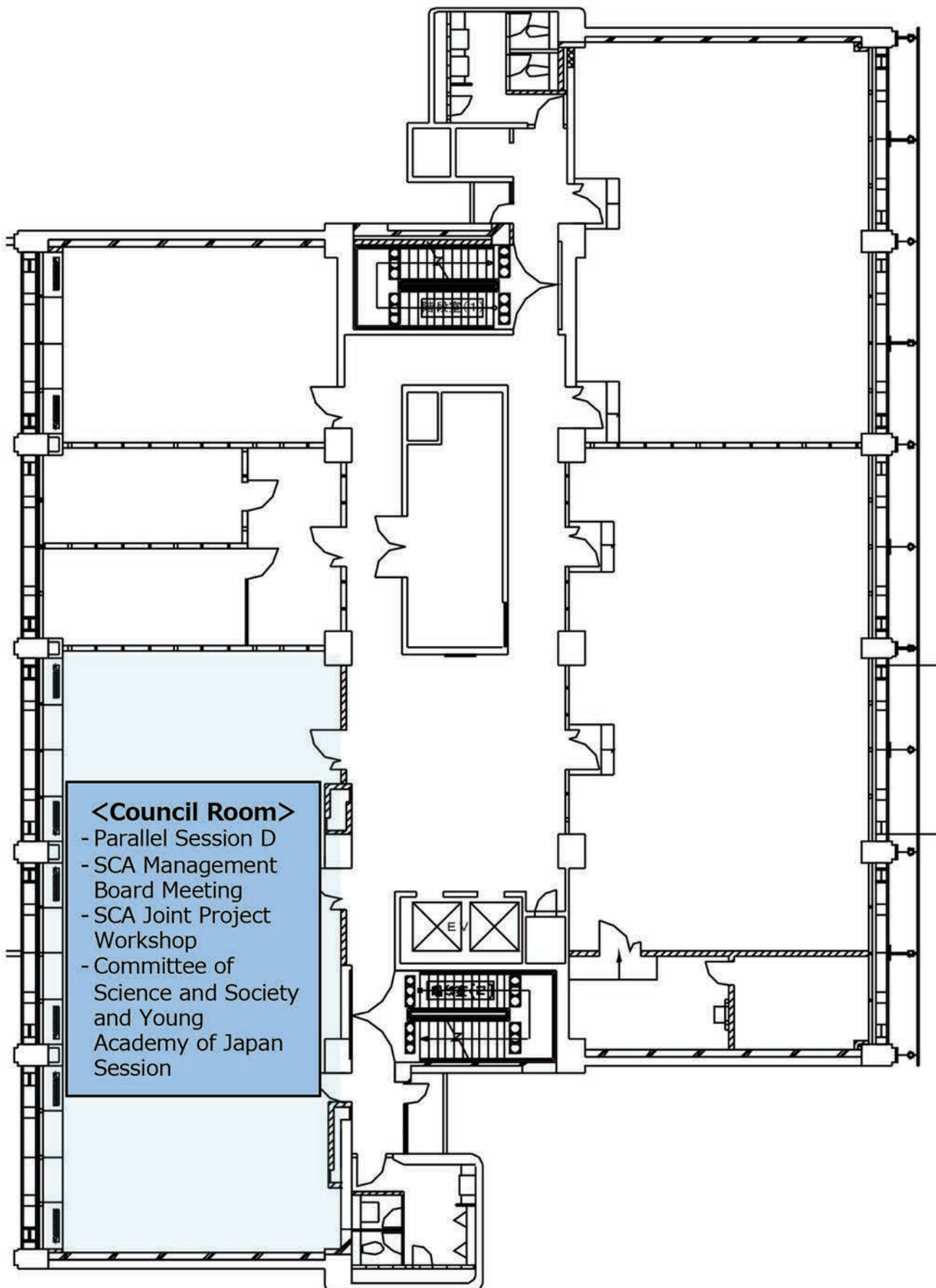
Day 3

9:00	General Assembly (SCA member organizations only)	[Parallel Session B6] Theme 1 (3)	[Parallel Session C6] Theme 5 (3)	[Parallel Session D3] Theme 2 (2)
10:30				
Break 10:30 -11:00				
Closing Session				
11:00	Declaration of SCA Statement President of SCJ			
	Greeting from President-Elect			
	Flag Ceremony			
12:00				
Lunch 12:00 -13:00 * for study tour participants only				
13:00	Study Tour (international participants only)			
18:00				
Adjourn 18:00				

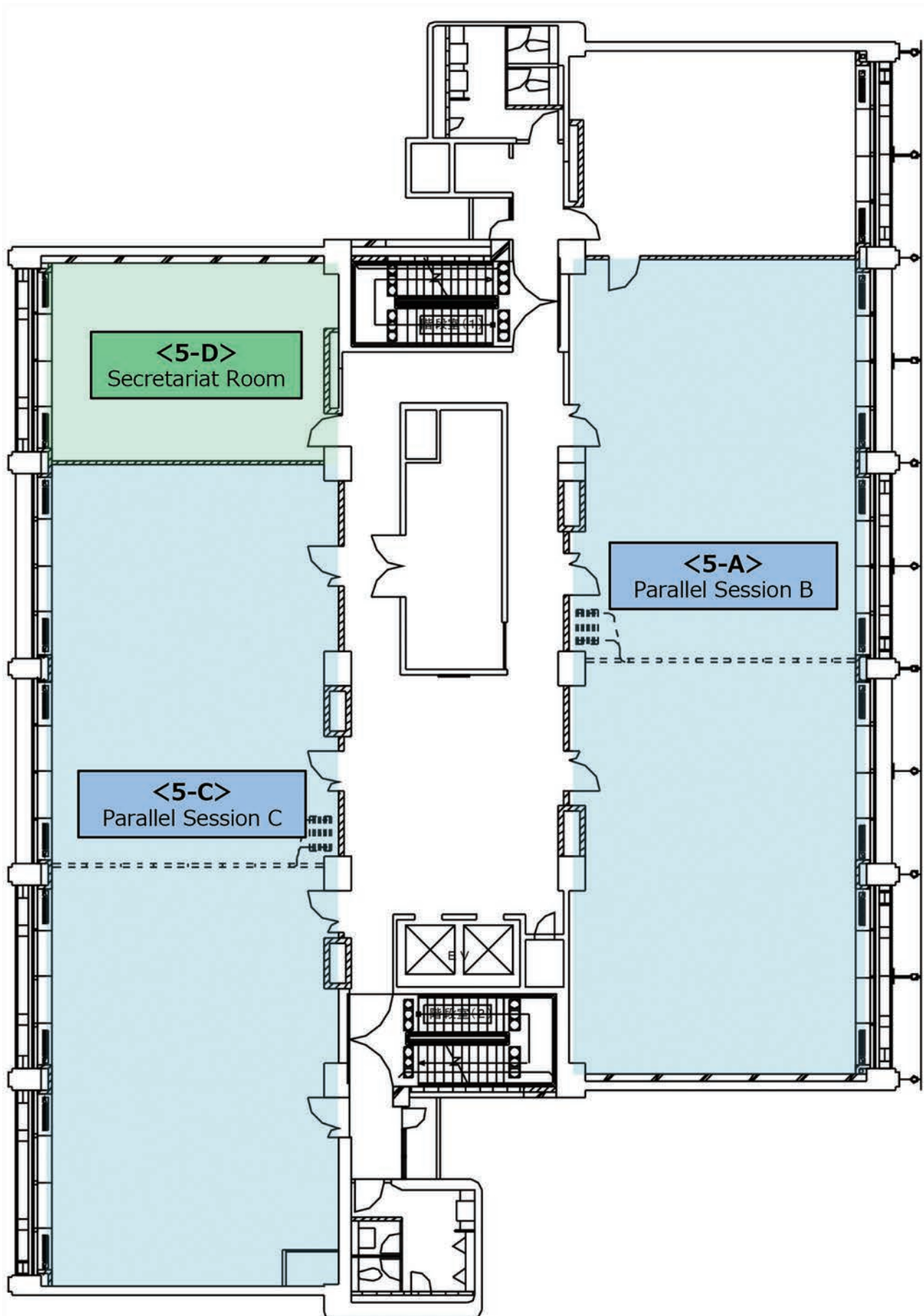
Floor Map [1F]



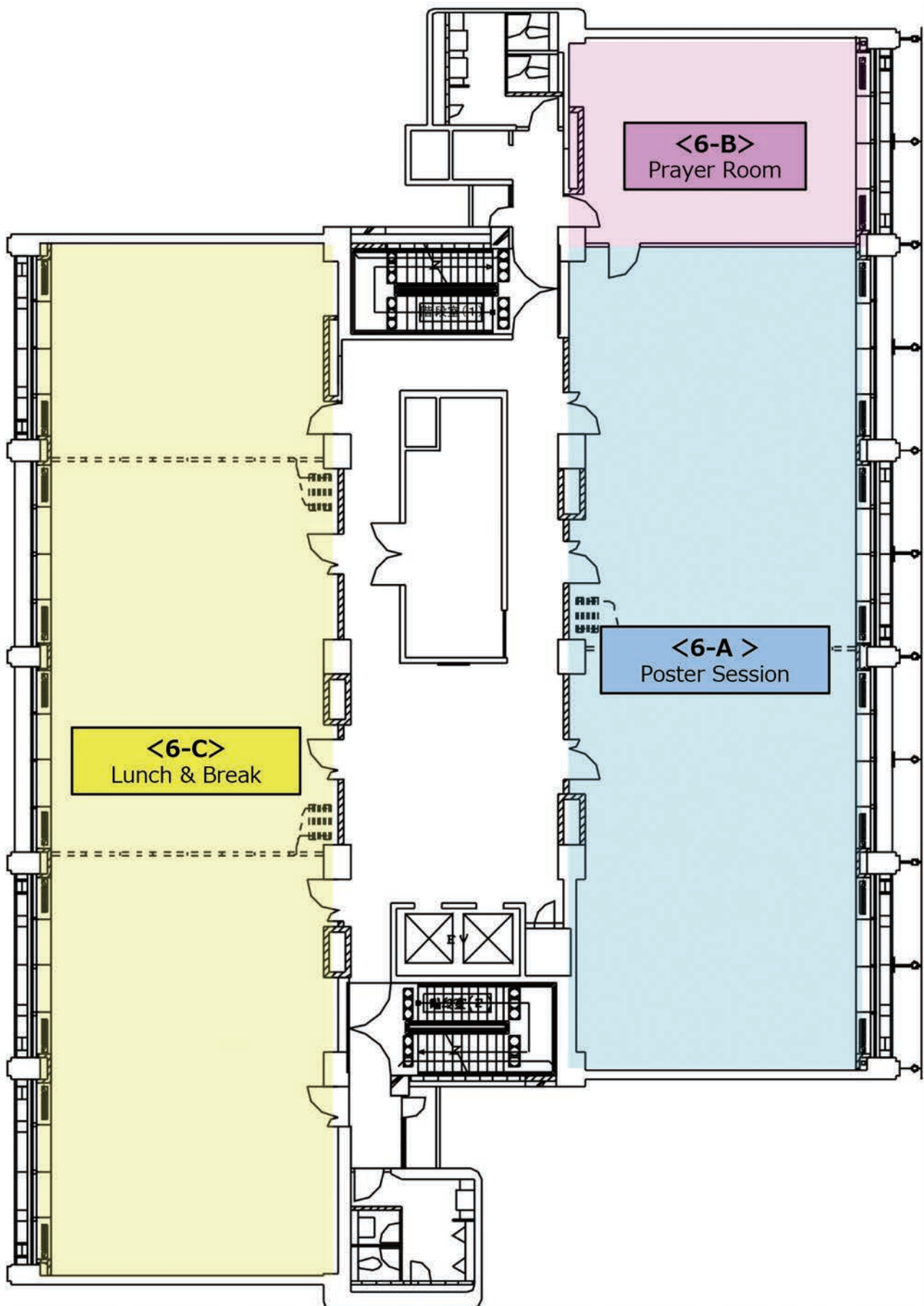
Floor Map [2F]



Floor Map [5F]



Floor Map [6F]



Day 1

Wednesday, 5th December

8:00 - Registration

9:10 - 9:30 Opening Ceremony @ Assembly Hall (1F)

MC: **Prof. Hiroshi Yoshino**
Secretary General / Treasurer of SCA
Professor Emeritus
Tohoku University, Japan

Welcome Remarks

Dr. Juichi Yamagiwa
President, Science Council of Japan
President, Kyoto University

Opening Remarks

Prof. Dr. Quazi Abdul Fattah
President, Science Council of Asia
President, Bangladesh Academy of Sciences
(Prof. Naiyyum Choudhury, Vice-President of BAS, reads a message for Prof. Fattah)

Congratulatory Address by the Guest of Honor

Mr. Takuya Hirai
Minister of State for Science and Technology Policy

9:30 - 10:30 Keynote Speech 1 @ Assembly Hall (1F)

MC: **Prof. Koji Miyazaki**
Professor Emeritus
Tokyo University of Foreign Studies, Japan

Prof. Leena Srivastava
Co-chair of the FE Advisory Committee

Prof. Kazuhiko Takeuchi
Vice President, Science Council of Japan

10:30 - 11:00 Break

Parallel Session B1 [Theme 2 (1)] @ Conference Room 5-A (5F)

Co-Chairs: **Prof. Kaoru Arakawa**

Professor

Dean of the School of Interdisciplinary Mathematical Sciences,
Meiji University, Japan

Prof. Christina Aquino Binag

Professor of Chemistry (Vice President of SCA, Former President of
NRCP), University on Santo Tomas, Philippines

**Development of Predictive PBPK Model of Extended-Release
Metformin Tablets**

Frances Lois Ucab Ngo

Project Development Officer, University of the Philippines Manila, Philippines

**In vitro inhibitory activities of selected Philippine plant extracts on
carbohydrate-degrading enzymes linked to type-2 diabetes**

Erna Arollado

Director, Institute of Pharmaceutical Sciences, National Institutes of Health, University of
the Philippines Manila, Philippines

**The Application of Theory of Planned Behavior in Peer's Reproductive
Health Promoters**

Nurlaela Widyarini

Lecturer, Faculty of Psychology, Muhammadiyah University of Jember, Indonesia

**Artificial Nerve Guidance Conduits Based on Polycaprolactone /
Polyaniline / Collagen Type 1 Composite Nanofibers Using Rat
Sciatic Nerve Injury Model**

Christina Aquino Binag

Professor of Chemistry (Vice President of SCA, Former President of NRCP), University on
Santo Tomas, Philippines

2 minutes presentation by poster presenters (8)

Parallel Session C1 [Theme 5 (1)] @ Conference Room 5-C (5F)

Chair: **Prof. Toshio Koike**

Director

International Centre for Water Hazard and Risk Management (ICHARM), Japan

Understanding Disaster Risk: The Role of Science and Technology

Kenji Satake

Professor, the University of Tokyo, Japan

Floods and Sediment Disasters in Western Japan in July 2018

Toshio Koike

Director, International Centre for Water Hazard and Risk Management (ICHARM), Japan

Disaster Risk Governance and Transdisciplinary Approach for Building Societal Resilience to Disasters -Asian Civil Engineering Coordination Council Activity-

Kenichi Tsukahara

Professor, Kyushu University, Japan

2 minutes presentation by poster presenters (7)

Parallel Session D1 [Theme 3] @ Council Room (2F)

Chair: **Hiroshi Matsumoto, PhD.**

Professor

Executive Officer, University of Tsukuba Dean, Faculty of Life and Environmental Sciences Tsukuba, Japan

Japan's Forest Diplomacy and International Governance of Sustainable Development

Takashi Fujiwara

Representative, Japan Sustainable Forest Forum, Japan

Exploring decentralized bioenergy system supported by local bioresources in Japan

Chun Sheng Goh

JSPS-UNU Postdoctoral Fellow, United Nations University Institute for the Advanced Study of Sustainability (UNU-IAS)

Multidisciplinary and Integrated Approaches for Mainstreaming Biodiversity through Strengthening Regional and Global Partnership to Support SDGS

Enny Sudarmonowati

Deputy Chair for Life Sciences, Indonesian Institute of Sciences, Indonesia

The Molecular Phylogeny of Philippine Ophiorrhiza L. (Ophiorrhieae-Rubiaceae): a Proposal on Its Infrageneric Classification and Four New Endemic Species

Niña Kathryn Goles Alfeche

MS Biological Sciences; Science Research Specialist 1, the Graduate School, University of Santo Tomas, Philippines

The use of local Indonesian coconut water for bacterial cellulose-silver modified films and its antibacterial activities for wound dressing applications

Anastasia Wheni Indrianingsih

Researcher, Indonesian Institute of Sciences, Research Unit for Natural Product Technology, Indonesia

2 minutes presentation by poster presenters (2)

12:30 - 14:00 Lunch @ Conference Room 6-C (6F)

13:00 - 14:00 Poster Session @ Conference Room 6-A (6F) (Theme 2, 3, 5)

14:00 - 15:30 Parallel Sessions

Parallel Session B2 [Theme 7] @ Conference Room 5-A (5F)

Chair: **Prof. Koji Miyazaki**

Professor Emeritus

Tokyo University of Foreign Studies, Japan

Policies and Programs for Rural Poverty Alleviation in the Bangladesh Context

Mesbahuddin Ahmed

Fellow and Secretary, Bangladesh Academy of Sciences, Bangladesh

Indirect Policies for Poverty Alleviation through Education Systems in Developing Countries

Yui Nakamura

Associate professor, Faculty of Economics Fukuoka University, Japan

Issues for persons with disabilities in Japan to achieve SDGs : Poverty, Employment, and Education using National Survey

Kai Seino

Section Chief, Research Institute National Rehabilitation Center for Persons with Disabilities, Japan

Transition in Welfare Regime and Migration in East Asia

Wako Asato

Associate Professor, Kyoto University, Japan

Parallel Session C2 [Theme 8] @ Conference Room 5-C (5F)

Chair: **Prof. Nobuko Nagase**

Professor

Ochanomizu University, Japan

Academic Institutions Mobility in the ASEAN Region through Sharing of Best Practices in Sustainable Development

Lilito Dacoco Gavina

Director, Partnership and Special Projects, Don Mariano Marcos Memorial State University (DMMMSU), Philippines

Sustainability in Education Towards Global Citizenship

Sharifah Zarina Syed Zakaria

Associate Professor, Universiti Kebangsaan Malaysia, Malaysia

Exploring Strategies for Sustainable Financing of Early Childhood Care and Education: Evidence from Cambodia, Lao PDR and Viet Nam

Keiichi Ogawa

Professor / Department Chair, Kobe University, Graduate School of International Cooperation Studies, Japan

Promoting Sustainability through Formal and Nonformal Collaborative Education

Jane Singer

Associate Professor, Graduate School of Global Environmental Studies, Kyoto University, Japan

Gender Equality in Islamic Boarding School in Indonesia

Oki Dermawan Djusar

Lecturer, Raden Intan Islamic State University, Indonesia

2 minutes presentation by poster presenters (3)

14:00 - 15:30 SCA Management Board Meeting @ Council Room (2F)

SCA Management Board Members only

15:30 - 16:00 Coffee Break @ Conference Room 6-C (6F)

16:00 - 17:30 Parallel Sessions

Parallel Session B3 [Theme 4] @ Conference Room 5-A (5F)

Chair: **Prof. Matori Yamamoto**

Professor

Faculty of Economics, Hosei University, Japan

Urban Conservation and Historical Heritage for the Revival of Aleppo

Kosuke Matsubara

Associate Professor, Tokyo Institute of Technology, Japan

Safeguarding and Sustainable Development Goals of Intangible Cultural Heritage

Dawnhee Yim

Member, the National Academy of Sciences, Republic of Korea

Localizing SDG Indicators for Japanese Local Governments

Shun Kawakubo

Associate Professor, Hosei University, Japan

2 minutes presentation by poster presenters (2)

Parallel Session C3 [Theme 1 (1)] @ Conference Room 5-C (5F)

Chair: **Shinichi Tanabe**
Professor
Department of Architecture, Waseda University, Japan

Off-Grid Housing Development Towards the Sustainable Society in 2050 in India

Ben Nakamura
Principal, Ben Nakamura and Associates, Inc., Japan

The Role and Opportunities of Solar Home System to Support Green Energy for Tourism in Bunaken Island Indonesia

Meita Rumbayan
Researcher, Sam Ratulangi University, Indonesia

Thermal Comfort and Productivity for Zero Energy Building

Shinichi Tanabe
Professor, Department of Architecture, Waseda University, Japan

Study on Indoor Thermal Environment and Energy use in Different Ecological Region of Nepal

Tika Ram Pokharel
Ph.D. Student, Tokyo City University, Japan

2 minutes presentation by poster presenters (11)

16:00-17:30 SCA Joint Project Workshop @ Council Room (2F)

Establishment of Environmental Conservation Platform of Tonle Sap Lake

Prof. Chihiro Yoshimura
Associate Professor
Tokyo Institute of Technology, School of Environment and Society, Japan

Prof. Om Romny
Director General
Institute of Technology of Cambodia (ITC), Cambodia

Producing Biomass Energy and Material through Revegetation of Deteriorated Grasslands in Indonesia

Prof. Toshiaki Umezawa

Professor

Research Institute for Sustainable Humanosphere, Kyoto University, Japan

Implementation of Disaster Resilient City Through SATREPS Project in Myanmar -Development of a Comprehensive Disaster Resilience System and Collaboration Platform in Myanmar-

Prof. Kimiro Meguro

Professor

Institute of Industrial Science, the University of Tokyo, Japan

Future of Ocean Sustainability from Asia and Pacific Perspective

Prof. Mitsuo Uematsu

Emeritus Professor

Atmosphere and Ocean Research Institute, the University of Tokyo

Prof. Lourdes J Cruz

Chair, Philippines NC of FE, National Academy of Science and Technology of Philippines

17:30-18:30 Break

18:30-20:30 Reception organized by SCJ

BRASSERIE PAUL BOCUSE Le Musée
The National Art Center, Tokyo 3F
(Next to the Science Council of Japan)

Day 2

Thursday, 6th December

8:30 - Registration

9:00 - 10:30 Keynote Speech 2 @ Assembly Hall (1F)

MC: **Prof. Koji Miyazaki**
Professor Emeritus
Tokyo University of Foreign Studies, Japan

Mr. Masaya Futamiya
Chair of Committee on Corporate Behavior & Social Responsibility, Keidanren
Director - Chairman
Sompo Japan Nipponkoa Insurance Inc.

Prof. Om Romney
Director General
Institute of Technology of Cambodia (ITC)

Prof. Teruo Kishi
Science and Technology Advisor to the Minister for Foreign Affairs of Japan

10:30 - 11:00 Break

11:00 - 12:30 Parallel Sessions

Parallel Session B4 [Theme 9] @ Conference Room 5-A (5F)

Chair: **Prof. Nobuko Nagase**
Professor
Ochanomizu University, Japan

The Sustainable Development Goals (SDGs) and SNA/SEEA as the Basis for Integrated Statistical Systems

Keiji Ujikawa
Professor, Yokohama National University, Japan

Sharing Housework between Husbands and Wives: How to Improve Marital Satisfaction for Working Wives in Japan

Emiko Usui
Associate Professor, Hitotsubashi University, Japan

Effective Strategy To Increase Internet-User Traffic On Intellectual Property Website (Case Study: Indonesian Institute Of Sciences)

Harini Yaniar

Head of IP Valuation Sub division, Center for Innovation, Indonesian Institute of Sciences, Indonesia

A Research on Japanese Entrepreneur in ASEAN and their Innovation: Case study in Thailand

Hideshi Sawaki

Professor Extraordinary, Asia University, Japan

Product Planning Methods for BOP, Introduction to Smokeless Cooking Stove in Rural Myanmar

Motohiro Kurokawa

Professor, Takasaki City University of Economics, Japan

Towards the Improvement of Income Levels of Small Holders of Natural Rubber in Cambodia - The Establishment of Information Transfer System -

Nobuo Hirohata

Professor, Yamaguchi University, Japan

2 minutes presentation by poster presenters (3)

Parallel Session C4 [Theme 10] @ Conference Room 5-C (5F)

Chair: **Dr. Sakae Shibusawa**

Professor

Graduate School of Agriculture, Tokyo University of Agriculture and Technology, Japan

Addressing and Localizing Sustainable Development Goals through Grassroots-Based School-Plus-Home Gardens in the Philippines

Blesída Macasaet Calub

University Researcher, Agricultural Systems Institute (ASI), University of the Philippines Los Baños, Philippines

Identifying the Water Poor Households in Urban India: An Insight from the NSS Data

Ranjeeta Mishra

Postdoctoral fellow, United Nations University, Japan

Sustainable Way of Treating Groundwater Polluted with Arsenic, Iron and Ammonium by a Combination of Biological Filtration and One-Stage Nitritation - Anammox Process

Yoko Fujikawa

Associate Professor, Institute for Integrated Radiation and Nuclear Science, Kyoto University, Japan

Health Risk Assessment of Lead Pollution (Pb) in Green Shells (*Perna viridis*) at Cilincing

Anna Rejeki Simbolon

Researcher, Research Center for Oceanography, Indonesian Institute of Sciences (LIPI), Indonesia

Reusing Treated Municipal Wastewater for Crop Irrigation in South Korea

Seung Woo Park

Member, the National Academy of Sciences, Republic of Korea

Advancement of Asian Cassava Molecular Breeding towards SDGs

Motoaki Seki

Team Leader, RIKEN CSRS, Japan

2 minutes presentation by poster presenters (2)

Parallel Session D2 [Theme 6] @ Council Room (2F)

Co-chairs: **Prof. Matori Yamamoto**

Professor

Faculty of Economics, Hosei University, Japan

Prof. Ni Ni Hlaing

Member of MAAS, Head of English Department, Dean of Faculty of Humanities and Social Sciences of Mandalay University of Distance Education (MUDE), Ministry of Education of Myanmar, Myanmar Academy of Arts and Science (MAAS), Myanmar

Challenges Faced by Higher Education Female Leaders in Myanmar

Ni Ni Hlaing

Member of MAAS, Head of English Department, Dean of Faculty of Humanities and Social Sciences of Mandalay University of Distance Education (MUDE), Ministry of Education of Myanmar, Myanmar Academy of Arts and Science (MAAS), Myanmar

Promoting Gender Equality in the Japanese Academia: How to Improve Academic Environments from the Perspective of SDG5

Kumie INOSE

Professor, Konan University, Japan

Sexual Harassment in Japanese Academic Community

Hiroko Goto

Dean / Professor, Chiba University Law School, Japan

Engendering Value Chains for Inclusive Prosperity: The Case of Tuna Fisheries in the Philippines

Marieta Bañez Sumagaysay

Executive Director, National Research Council of the Philippines, Department of Science of Technology, Philippines

Women's Participation in Environmental Protection and Sustainable Agricultural Development: A Micro-level Study of Two Villages in Bangladesh and Japan

Tofael Ahamed

Associate Professor, Faculty of Life and Environmental Science, University of Tsukuba, Japan

From Cosmetic Multiculturalism to Caring Multiculturalism: Toward Social Inclusion of Migrant Children and Women in Japan

Aya Kitamura

Associate Professor, F Tsuda University, Japan

12:30 - 14:00 Lunch

13:00 - 14:00 Poster Session @ Conference Room 6-A (6F) (Theme 1, 4, 8, 9, 10)

Co-Conveners:

Prof. Tetsuzo Yasunari

Member of FE Advisory Committee, Chair of NC-FE / SCJ, Vice-Chair of Japan NC for FE, DG of RIHN

Prof. Hein Mallee

Director of Asia Regional Centre of FE, Prof. of RIHN

Participants (oral presenters and panel members):

Prof. Leena Srivastava

Keynote speaker of the plenary session of SCA; Co-chair of the FE Advisory Committee

Dr. Mazlan Othman

Director of ISC Regional Office of Asia & Pacific

Prof. Mitsuo Uematsu

Member of Regional Committee for ISC. FE Ocean KAN, Prof. Emeritus of University of Tokyo

Dr. Shin-Chun Candice Lung

Chair, Taiwan NC of FE, Academia Sinica

Prof. Soonchang Yoon

Chair of Korean NC for FE, Vice-President of Korean Academy of Science and Technology

Prof. Chuluun Togtokh

Chair, Mongolian National Committee of FE, Prof. of Mongolian National University

Prof. Lourdes J Cruz

Chair, Philippines NC of FE, National Academy of Science and Technology of Philippines

Prof. Makoto Taniguchi

FE Nexus KAN, Prof. of RIHN

Prof. Kazuhiko Takeuchi

Chair, Japan National Committee of FE, Vice President of Science Council of Japan, President of IGES

Prof. Fumiko Kasuga

Director of the FE Global Hub, Tokyo

Dr. Wang Qinxue

National Institute of Environmental Studies, Tsukuba

15:30 - 16:00 Coffee Break @ Conference Room 6-C (6F)

16:00 - 17:30 Parallel Sessions

Parallel Session B5 [Theme 1 (2)] @ Conference Room 5-A (5F)

Co-chairs: **Prof. Hiroshi Yoshino**

Professor Emeritus

Tohoku University, Japan

Dr. Suvdantsetseg Balt

Senior Officer

Division of International relation and cooperation, the Mongolian Academy of Sciences, Mongolia

Role of Regional Collaboration in Science and Technology Research for Achieving SDGs: Perspectives from the JASTIP Experience

Yasuyuki Kono

Professor, Kyoto University, Japan

Adaptable Infill for the Durable and Sustainable Japanese Housing

Kazunobu Minami

Professor, Shibaura Institute of Technology, Japan

Indoor Air Quality and Health in Residential Buildings in Major Cities of Indonesia

A case study of Surabaya

Tetsu Kubota

Associate Professor, Graduate School for International development and Cooperation, Hiroshima University, Japan

Study on Thermal Environment of Temporary Shelters Built in Nepal after Massive Earthquake 2015

Rita Thapa

PhD, Tokyo City University, Graduate School of Environmental and Information Studies, Japan

Solution-Oriented Interdisciplinary Approach for Implementation of SDG's in Mongolia

Suvdantsetseg Balt

Senior Officer, Division of International relation and cooperation, the Mongolian Academy of Sciences, Mongolia

Study on a Sustainable Method of Pro-Environmental Behavior Habituation

Shinnosuke Adachi

Graduate Student, Waseda University, Department of Architecture, Japan

The Transboundary Water Resource Management in Lower Mekong Basin: A Cooperative Game Approach

Lan Phuong Nguyen

PhD Student, Graduate School of Global Environmental Studies, Kyoto University, Japan

Parallel Session C5 [Theme 5 (2)] @ Conference Room 5-C (5F)

Co-chairs: **Prof. Masako Yoneda**

Professor

Keio Advanced Research Centers, Keio University, Japan

Prof. Mohd Raihan Taha

Director

Institute for Environment and Development (LESTARI), Universiti Kebangsaan Malaysia, Malaysia

Stronger Mega Cities for the Next Major Earthquake

Akira Wada

Professor Emeritus, Tokyo Institute of Technology, Japan

Developing an Early Warning System of Dzud (cold-season disaster) in Mongolia

Masato Shinoda

Professor, Graduate School of Environmental Studies, Nagoya University, Japan

Loss and Damage from Flooding in the Pahang Region, Malaysia

Mohd Raihan Taha

Director, Institute for Environment and Development (LESTARI), Universiti Kebangsaan Malaysia, Malaysia

Building a Connection between Scientists and Local Community after the 2014 Eruption of Ontake Volcano

Koshun Yamaoka

Professor, Graduate School of Environmental Studies, Nagoya University, Japan

Heat Stress Assessment for Outdoor Workers with Low-cost Sensors for Heat Adaptation Policies

Shih-Chun Lung

Research Fellow, Academia Sinica, Taiwan

On-Demand Image Acquisition System by Micro-Satellite Constellation under International Consortium

Yukihiro Takahashi

Professor, Hokkaido University, Japan

16:00 - 17:30 Committee of Science and Society and Young Academy of Japan Session @ Council Room (2F)

Session Organizers

Chair: **Dr. Miyoko O. Watanabe**

Vice President, SCJ & Deputy Executive Director, Japan Science and Technology Agency

Panel discussion facilitator:

Prof. Taikan Oki

Professor, the University of Tokyo

Commentators:

Prof. Kaoru Endo

Professor, Gakushuin University

Prof. Kazuyoshi Nishijima

Associate Professor, Disaster Prevention Research Institute, Kyoto University

Presenters

Lectures:

Quest for coexistence between human and wildlife

Dr. Juichi Yamagiwa

President of SCJ & President of Kyoto University

Living with natural disasters

Prof. Dwikorita Karnawati

Former President, Gadjah Mada University, Indonesia

Beyond SDGs - Education & The 4th Industrial Revolution

Prof. Sharifah Zarina Syed Zakaria

Institute for Environment and Development (LESTARI), Malaysia

Visual Communication Design for Language Revitalization

Ms. Fumi Yamamoto

Designer/illustrator, PhD student of Kyoto City University of Arts

Commentators:

Prof. Dawnhee Yim (Korea)

Member of the National Academy of Sciences, Republic of Korea

Ms. Mriduchhanda Chattopadhyay (India)

PhD student in Economics of Waseda University

Dr. Michiharu Nakamura

Senior Advisor of JST, A member of UN 10-member group

Prof. Kaoru Endo

Prof. Kazuyoshi Nishijima

Day 3

Friday, 7th December

8:30 - Registration

9:00 - 10:30 General Assembly @ Assembly Hall (1F)

SCA member organizations only

9:00 - 10:30 Parallel Sessions

Parallel Session B6 [Theme 1 (3)] @ Conference Room 5-A (5F)

Chair: **Prof. Hiroyuki Yamamoto**
Professor
Nagoya University, Japan

Geophysical Methods in Determining Energy Reserves of Geothermal for Sustainable Development

Anastasia Neni Candra Purnamasari
Lecturer, Universitas Proklamasi 45 Yogyakarta, Indonesia

Growth Stresses and Related Problems in Tropical Fast-Growing Species

Hiroyuki Yamamoto
Professor, Nagoya University, Japan

Resources-Energy-Development Nexus and its Implications for Achieving the SDGs in Asia

Benjamin Craig McLellan
Associate Professor, Kyoto University, Graduate School of Energy Science, Japan

Thermal Characterization of Portable Micro-Gasifier Using Biomass Waste as Fuel and Its Economic

Wira Widyawidura
Director, Center for Energy and Environmental Studies, Universitas Proklamasi 45, Indonesia

Fabrication and Characterization of Polypyrrole, Carbon Black and Carbon Nanotubes for Abaca and Banana-Cotton Textile-Based Supercapacitor Electrodes

Angelico Nichole Meneses Tolentino

MS Chemistry Student, University of Santo Tomas, Philippines

The Framing Effect of Energy Labels: A Study of Energy Label Designs' effect on Correct Evaluation of the Energy Saving performance of Buildings

Mieko Fujisawa

Professor, Kanazawa university, Japan

Parallel Session C6 [Theme 5 (3)] @ Conference Room 5-C (5F)

Co-chairs: **Prof. Akira Wada**

Professor Emeritus

Tokyo Institute of Technology, Japan

Dr. Rilya Rumbayan

Lecturer and Researcher

Manado State Polytechnic, Indonesia

Linking post-disaster survey and disaster risk reduction - Activities of Japan Association for Wind Engineering -

Kazuyoshi Nishijima

Associate Professor, Disaster Prevention Research Institute, Kyoto University, Japan

Road Geohazard Risk Management using Adaptive Approach for meeting Country's Capacity

Kazushige Endo

Senior Staff, Minister's Secretariat, Ministry of Land, Infrastructure, Transport and Tourism, Japan

Diagnostic of Concrete Performance for Earthquake Resistance Buildings and Infrastructure Using Infrared Thermography

Rilya Rumbayan

Lecturer and Researcher, Manado State Polytechnic, Indonesia

Secondary Analysis of the Questionnaire Survey on Scientific Research related to the Great East Japan Earthquake Disaster by Science Council of Japan - Multivariate Analysis on Data Sharing and Fund Shortage -

Keiichi Sato

Associate Professor, Senshu University, Japan

Parallel Session D3 [Theme 2] @ Council Room (2F)

Chair: **Prof. Kaoru Arakawa**

Professor

Dean of the School of Interdisciplinary Mathematical Sciences, Meiji University, Japan

Big Data Analysis of the Urban Heat Island Effect on Human Health Problems in Urban Central Tokyo

Kayoko Yamamoto

Associate Professor, University of Electro-Communications, Japan

Vaccine Development for Jembrana Disease Control in Bali Cattle: First Field Trial

Endang Tri Margawati

Researcher, Research Centre for Biotechnology - LIPI, Indonesia

Field Survey on Impact of Living Environments on Brain, Cardiovascular, Respiratory and Locomotive system and Co-Benefit Evaluation of Disease and Long-Term Care Prevention

Toshiharu Ikaga

Professor, Keio University, Japan

Healthy Cities in Asia: urban planning and governance addressing sustainable development goals (SDGs)

Keiko Nakamura

Professor, Tokyo Medical and Dental University, Japan

10:30 - 11:00 Break

11:00 - 12:00 Closing Session @ Assembly Hall (1F)

MC: **Prof. Koji Miyazaki**
Professor Emeritus
Tokyo University of Foreign Studies, Japan

Declaration of SCA statement

Prof. Hiroshi Yoshino
Secretary General / Treasurer of SCA

Greeting from President-Elect

Prof. Dr. Xi Wang
Vice President, China Association for Science and Technology
Director General, Shanghai Institute of Microsystem and Information Technology, Chinese Academy of Sciences

Flag Ceremony

Handing over the SCA Flag to the Host of the next Conference

Closing Remarks

Prof. Kazuhiko Takeuchi
Vice President, Science Council of Japan

12:00 Adjorn

Partitipants other than those who do not participate in the study tour

12:00 - 13:00 Lunch

Study tour participants only

13:00 - 18:00 Study Tour

International participants only and advanced reservation is required. (Reservation is not possible on the day.)

Poster Session 1

13:00-14:00, Wednesday, 5th December

Conference Room 6-A (6F)

[Theme 2]

ID No.	Presenter	Title
2-13-P	Gerwin Louis Tapan Dela Torre Institute of Pharmaceutical Sciences, National Institutes of Health, University of the Philippines Manila	Premna odorata and Psidium guajava ethanol extracts as preservatives in suspension
2-14-P	Kimiko Nakayama Kobe University	Relationship between weak consciousness concerning Community Organization Activities and personal factors of Japanese Public Health Nurses
2-15-P	Hisaya Tanioka Tanioka Clinic	In vivo Trabecular Architecture of the Vertebrae: Analysis of Aging, Gender, and Smoking
2-16-P	Angelina Alampay Atienza College of Dentistry, University of the Philippines Manila	Antimicrobial action of Calcium Hydroxide, Chlorhexidine, Caesalpinia pulcherrima and their Combination on Enterococcus faecalis and Candida albicans
2-17-P	Nodoka Yamauchi France Bed Co.,Ltd.	Design Principles of products for active seniors
2-18-P	Sam Dominic Aquino Binag Research Center for the Natural and Applied Sciences, University of Santo Tomas	Are Herbal Medicines SAFE? The Truth Revealed for Blumea balsamifera (L.) DC. (Sambong) and Ehretia microphylla Lam. (Tsaang-gubat) Derived Medicinal Products
2-19-P	Hiromi Kohori Segawa Kyoto University graduate school of public health	Exploring prevention measures of Non-Communicable Diseases according to Gross National Happiness in Bhutan: 1st-Phase Comprehensive Qualitative Study
2-20-P	Nobuo Nishi National Institute of Health and Nutrition, National Institutes of Biomedical Innovation, Health and Nutrition	Scenarios for sustainable medical and long-term care expenditures for the elderly in Japan

[Theme 3]

ID No.	Presenter	Title
3-06-P	Masanori Mori Nagoya University Graduate School of Bioagricultural Sciences and School of Agricultural Sciences Research center for Future Earth	The influence of the forest fires occurred in agricultural concessions on local
3-07-P	Rina Hidayati Pratiwi Universitas Indraprasta PGRINutrition	Molecular Identification of Endophytic Bacteria from <i>Neesia altissima</i> Bl. (Malvaceae) Antagonistic to Diarrhea-Causing Bacteria

[Theme 5]

ID No.	Presenter	Title
5-16-P	Ze Liu Toyo University	Prediction of heatstroke occurrence & simulation of heat acclimation in labor working environment on Asian region
5-17-P	Satoru Nishikawa Nagoya University Disaster Mitigation Research Center	Ichi-Nichi-Mae Project' for Disaster Awareness & the Possibility of Technical Transfer to other Disaster-Prone Countries ; 'If We were Back the Day before the Disaster, How can We better Prepare?'
5-18-P	Campina Illa Prihantini Bakti Bangsa Institute of Economic Science Pamekasan	Estimating The Preventive Expenditure Based On Flood In Dalpinang Village, Sampang Regency As Effort Reducing The Effect Of Flood
5-19-P	Haruo Hayashi National Research Institute for Earth Science and Disaster Resilience	Exploring the possibility of online synthesis system for disaster risk duction as a tool for promote "consilience" of knowledge and practice
5-20-P	Keiko Tamura Niigata University	Constructing the Concept of 'Build Back Better' for the Development of Sustainable Society
5-21-P	Yusuke Amano Ministry of Land, Infrastructure, Transport and Tourism, Japan	The way for Science and Technology community to promote investment in Disaster Risk Reduction
5-22-P	Kaoru Takara Kyoto University	Integration of Knowledge to Estimate Probable Maximum Flood Events

Poster Session 2

13:00-14:00, Thursday, 6th December

Conference Room 6-A (6F)

[Theme 1]

ID No.	Presenter	Title
1-18-P	Syamsul Maarif Proklamasi 45 University	Analysis of the effect of temperature and mixture of raw materials on pyrolysis process with single retort-rocket stove technology to charcoal briquette characteristics
1-19-P	Muchamad Malik Proklamasi 45 University	An experimental study on the performance of Savonius wind turbines related to blade variation
1-20-P	Erina Kojima Nagoya University, Graduate school of Bioagricultural Science school of Agricultural Science Nagoya University, Future Earth Research Center	Wood engineering aiming to integrate forest management and timber utilization (1) Supply and demand balance of forest resources based on carbon balance
1-21-P	Kazuhiro Fukuyo Yamaguchi University	Correlation and Causality between Economic Growth and Energy Consumption in the Asian Landlocked Countries
1-22-P	Weijun Gao Qingdao University of Technology, China and The University of Kitakyushu, Japan	Situation of Energy Use and Environment in Rural residential Buildings with Tourism Business of Zhejiang, China
1-23-P	Muhammad Noviansyah Aridito Department of Environmental Engineering, Proklamasi 45 University Yogyakarta (UP45)	Characterization of Product from Pyrolysis Sawdust Briquette based on Variation of Heating Rate and Gas Suction Rate Using Rocket Pyrolyzer and Plastic Oil Burner
1-24-P	Celine Grace Vicencio Causapin The Graduate School, University of Santo Tomas	Multi-walled Carbon Nanotubes and Nickel Hydroxide on Banana-Polyester Woven Fabric as Supercapacitor Electrode Material: Preparation and Characterization
1-25-P	Mriduchhanda Chattopadhyay Graduate School of Economics, Waseda University	Willingness to pay for lowering the risk from dirty cooking energy: A case study of rural Indian households
1-26-P	Shinichi Taniguchi Waseda University	Effects of power-exchange openness to renewable energy on its penetration and social welfare
1-27-P	Yasuko Yoshino Nihon Univ.	Environmental Living Conditions and the Concept for a Bio-village in Sunan Yugur Autonomous County in China
1-28-P	Mishan Shrestha Tokyo City University, Yokohama	Study on thermal comfort in naturally ventilated higher secondary school buildings in Nepal

[Theme 4]

ID No.	Presenter	Title
4-06-P	Haruka Ono Toyohashi University of Technology	The Impact of Land Tenure Systems on Informal Urban Development in African Cities: A Comparative Study of Lusaka, Dakar and Nairobi
4-07-P	Xianqun Guo Kozo Keikaku Engineering Inc.	Reconstruction of Kumamoto Castle in 1960, Damages at 2016 Earthquakes and Restoration for Future

[Theme 8]

ID No.	Presenter	Title
8-07-P	Satoshi Araki University of Oxford	Are Skills the Key to Economic Success? Re-examining the Relative Impacts of Skills and Credentials on Occupations and Earnings
8-09-P	Mizue Y. Kissho Tokyo University of Science Research Center Math and Science Education, SSM	Science Education towards SDGs Society ~Marie S Curie as an Innovative Science Educator~
8-10-P	Akinori Yamabe Jichi Medical University	Learning SDGs for University Students in Japan

[Theme 9]

ID No.	Presenter	Title
9-07-P	Hoang Ngan Giang National Graduate Institute for Policy Studies	Micro Level Behavior toward Technological Upgrading for Domestic Market
9-08-P	Kunihiro Maeda Utilization of Digital Information Research Department, JIPDEC	The Normative "Platform as a Service" for SDGs Ecological Economy - Beyond the antagonism of "the ethics of market" and "the ethics of governance"
9-09-P	Somnath Sharma The University of Tokyo	An Analysis of Household Participation in the Formal and Informal Credit Sectors in India

[Theme 10]

ID No.	Presenter	Title
10-07-P	Satoko Mori Meisei University	Dilemmas and Challenges of Civil Society over SDGs 6: The Case of the Water Justice Movement in Asia
10-08-P	Hezri A. Adnan Center for Southeast Asian Studies (CSEAS), Kyoto University	The Sustainability Transition of Rice Cultivation in Northeast Thailand