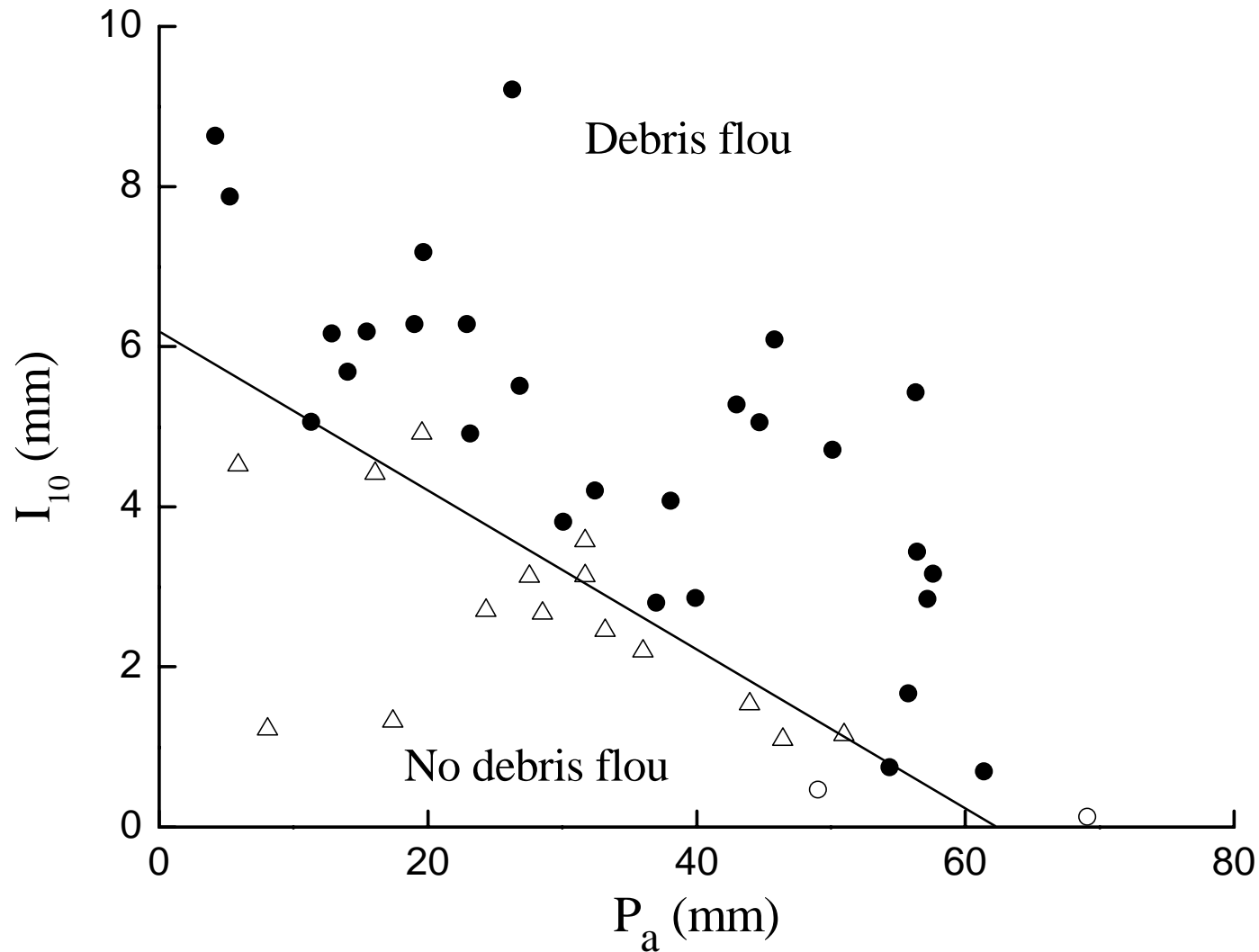


3. Strategies for Mitigation of Debris Flow Disasters

ppt-3

Prediction of debris flow

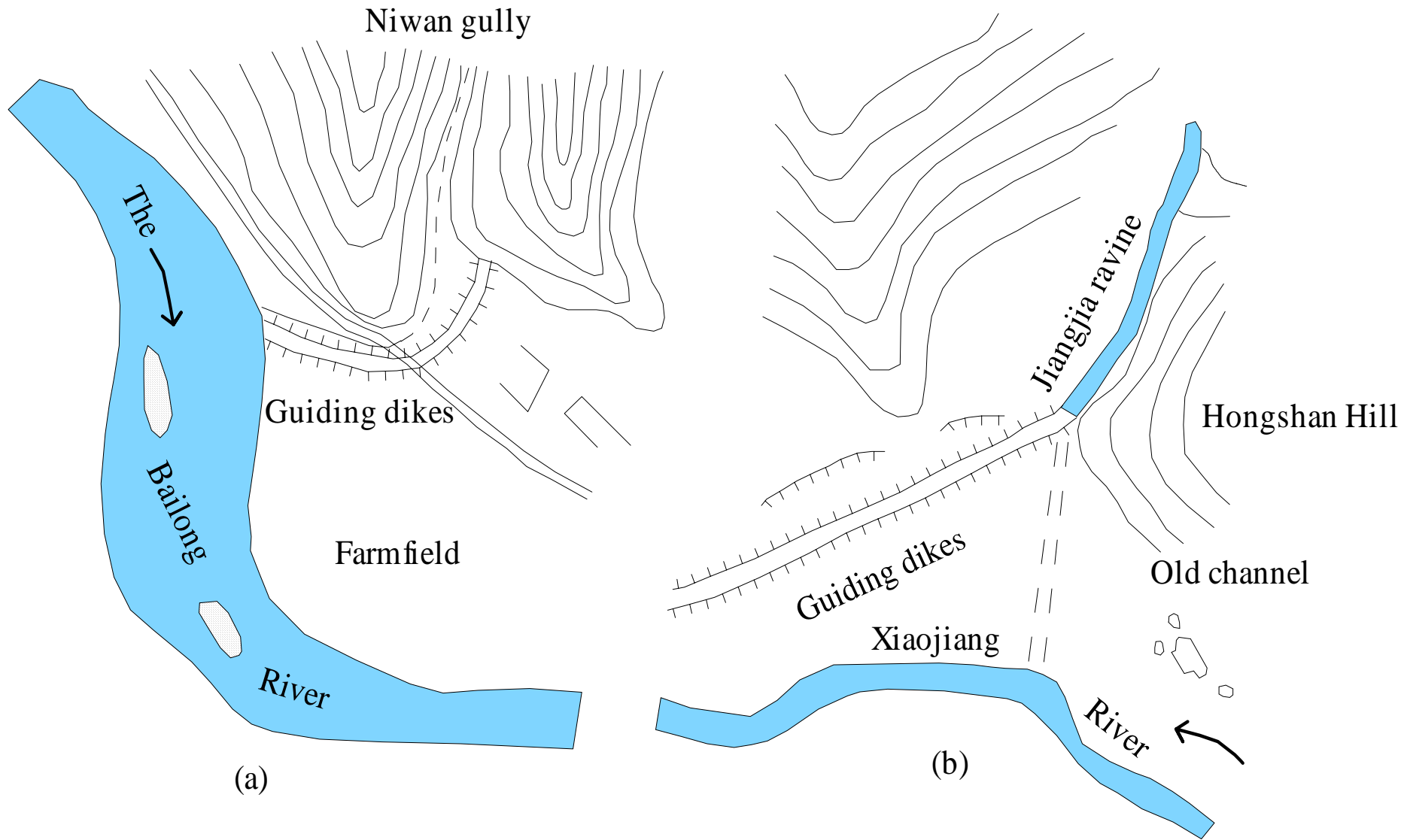


Critical 10 min. rainfall intensity, I_{10} , and antecedent rainfall index, P_a , for triggering debris flows in the Jiangjia Ravine, Xiaojiang Watershed on the Yunman-Guizhou plateau of China



Warning system - Ground sound wave probe installed on a dam.

Engineering mitigation and control of debris flow disasters



(a) Diversion channels at the Niwan Gully, which diverts debris flow and protects farmland. (b) A channel diverts debris flow to a debris silt basin, protecting the Xiaojiang River from damming.



Debris flow-guiding channels in Wudu County,
Gansu Province, in west China.









实施四五普法规划 推进依法治县进程

西號宾馆

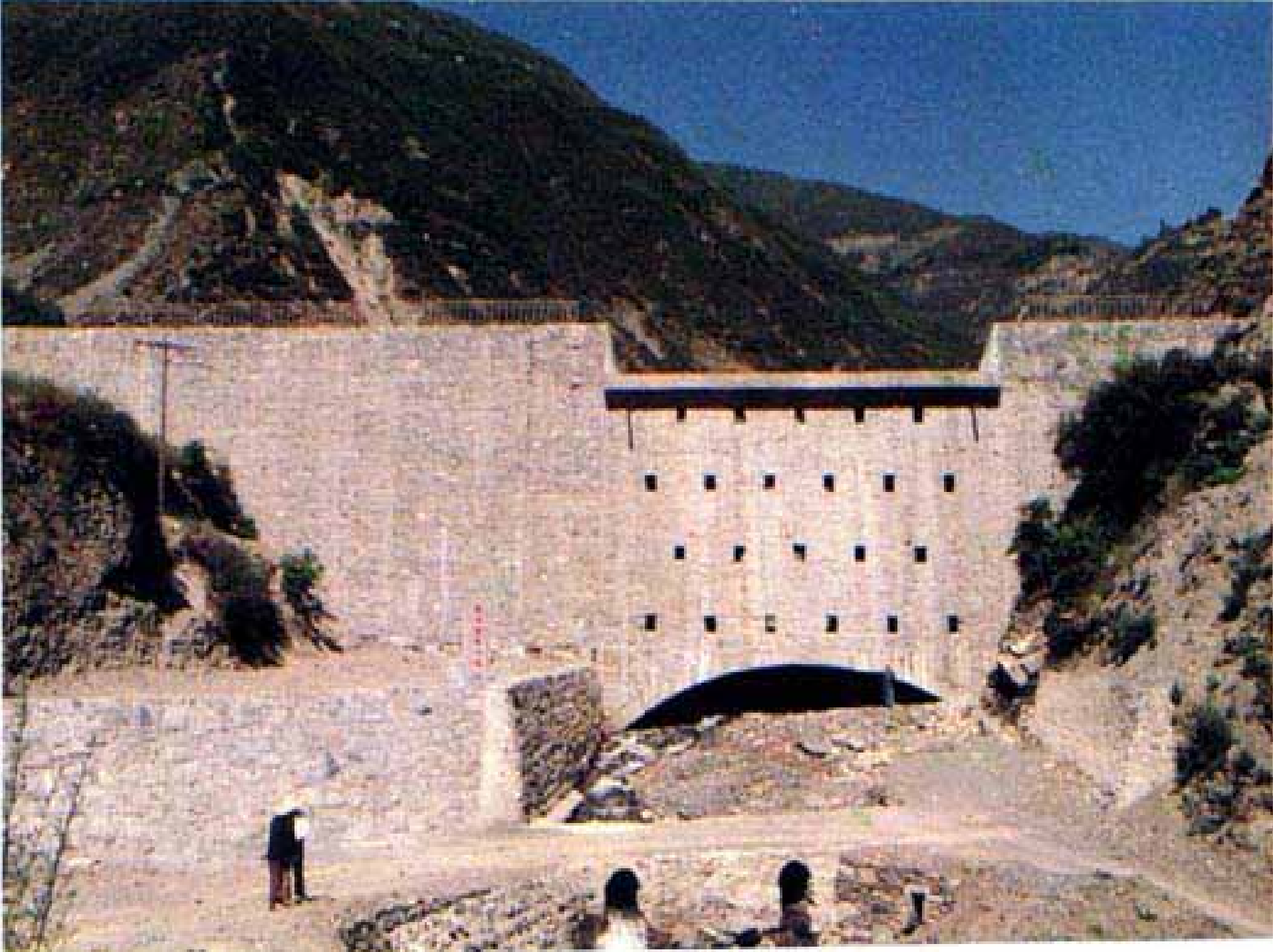
IVECO

川C 13683

2007/03/30



















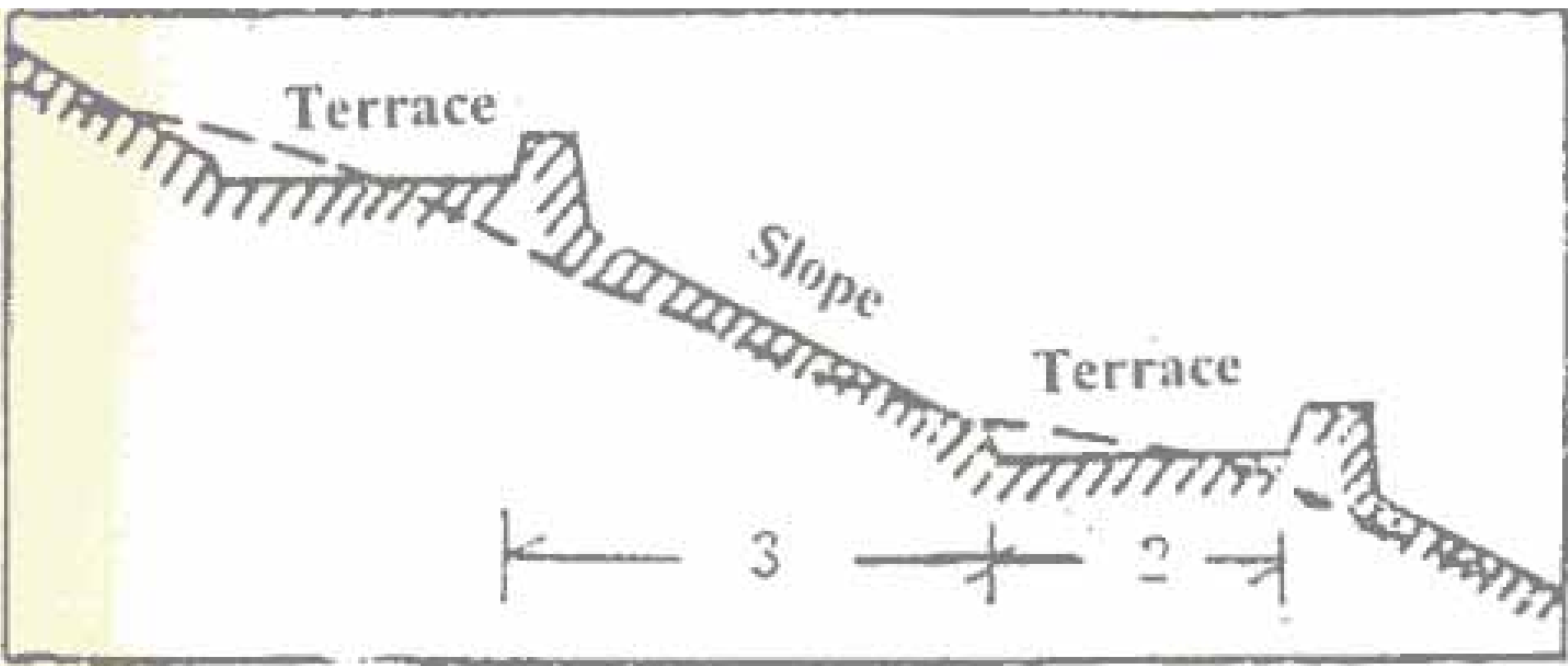
6.22.2001

Comprehensive control strategies



多照支沟二上的控制工程 (1966)-debris flow control dam train







多照平台上面的村庄与植被(vegetation and village in gully)



深沟公园-东川市 The Shengou gully in the Dongchuan town



2005/05/20

The Shengou Creek was a debris flow gully and has now become a tourism attraction



2005/05/20



Thank you